



ELECTRONIC COPY

LABORATORY GROWN DIAMOND REPORT

December 11, 2025	
IGI Report Number	LG744513530
Description	LABORATORY GROWN DIAMOND
Shape and Cutting Style	EMERALD CUT
Measurements	6.79 X 4.77 X 3.22 MM

GRADING RESULTS

Carat Weight	1.01 CARAT
Color Grade	D
Clarity Grade	VVS 2

ADDITIONAL GRADING INFORMATION

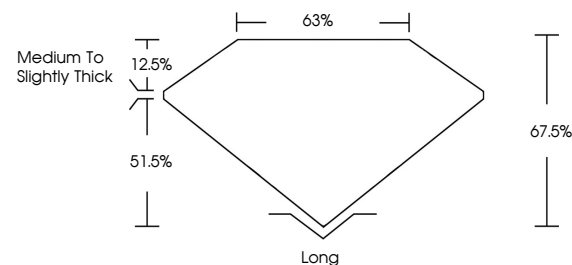
Polish	EXCELLENT
Symmetry	EXCELLENT
Fluorescence	NONE
Inscription(s)	 LG744513530

Comments: As Grown - No indication of post-growth treatment.

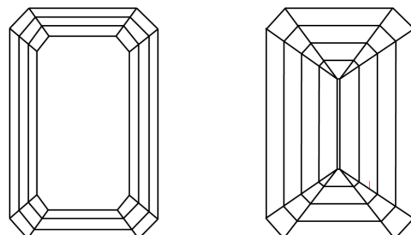
This Laboratory Grown Diamond was created by High Pressure High Temperature (HPHT) growth process.
Type II

LG744513530
Report verification at igi.org

PROPORTIONS

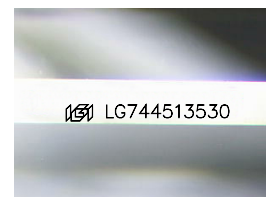


CLARITY CHARACTERISTICS



KEY TO SYMBOLS

Red symbols indicate internal characteristics.
Green symbols indicate external characteristics.



Sample Image Used

COLOR

D E F G H I J Faint Very Light Light

CLARITY

FL	IF	VVS ¹⁻²	VS ¹⁻²	SI ¹⁻²	I ¹⁻³
Flawless	Internally Flawless	Very Very Slightly Included	Very Slightly Included	Slightly Included	Included

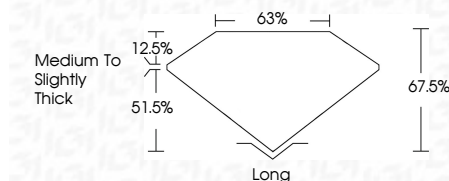
LABORATORY GROWN DIAMOND REPORT



December 11, 2025	
IGI Report Number	LG744513530
Description	LABORATORY GROWN DIAMOND
Shape and Cutting Style	EMERALD CUT
Measurements	6.79 X 4.77 X 3.22 MM

GRADING RESULTS

Carat Weight	1.01 CARAT
Color Grade	D
Clarity Grade	VVS 2



ADDITIONAL GRADING INFORMATION

Polish	EXCELLENT
Symmetry	EXCELLENT
Fluorescence	NONE
Inscription(s)	(G) LG744513530
Comments: As Grown - No indication of post-growth treatment.	
This Laboratory Grown Diamond was created by High Pressure High Temperature (HPHT) growth process.	
Type II	



© IGI 2020, International Gemological Institute

FD - 10 20



THIS DOCUMENT WAS PRODUCED WITH THE FOLLOWING SECURITY MEASURES: SPECIAL DOCUMENT PAPER, INK SCREENS, WATERMARK, BACKGROUND DESIGNS, HOLOGRAM AND OTHER SECURITY FEATURES NOT LISTED AND DO EXCEED DOCUMENT SECURITY INDUSTRY GUIDELINES

www.igi.org

December 11, 2025
GJ Report No | G744513530

Order Number 117, 2320	1.01 CARAT	Long	EXCELLENT	None	6811 (27.46% VS)
IG Report No G97461/18300	VS 2	Medium to Slightly Thick	EXCELLENT	NONE	6811 (27.46% VS)
GENERAL CUT	D				
5.75 X 7.47 X 3.22 MM					
Carat Weight	Color Grade	Clarity Grade	Depth	Polish	Symmetry
			Table		Fluorescence
			Grade		

Comments:
As Grown - No indication of post-growth treatment.
This Laboratory Grown Diamond was created by High Pressure High temperature (HPHT) growth process.