



**ELECTRONIC COPY**

## LABORATORY GROWN DIAMOND REPORT

December 10, 2025	
IGI Report Number	LG744513502
Description	LABORATORY GROWN DIAMOND
Shape and Cutting Style	ROUND BRILLIANT
Measurements	9.59 - 9.66 X 5.90 MM
<b>GRADING RESULTS</b>	
Carat Weight	3.34 CARATS
Color Grade	D
Clarity Grade	INTERNALLY FLAWLESS
Cut Grade	IDEAL

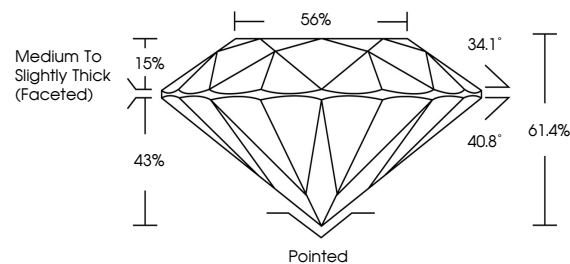
### ADDITIONAL GRADING INFORMATION

Polish	EXCELLENT
Symmetry	EXCELLENT
Fluorescence	NONE
Inscription(s)	 LG744513502

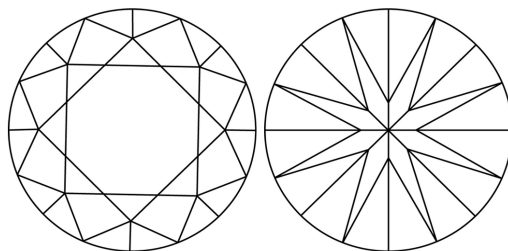
Comments: HEARTS & ARROWS  
As Grown - No indication of post-growth treatment.  
This Laboratory Grown Diamond was created by High  
Pressure High Temperature (HPHT) growth process.  
Type II

LG744513502  
Report verification at [igi.org](https://igi.org)

## PROPORTIONS

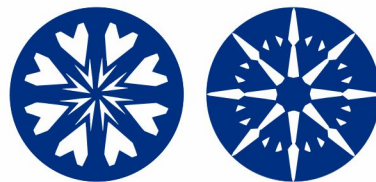


## CLARITY CHARACTERISTICS

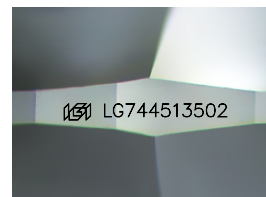


## KEY TO SYMBOLS

Red symbols indicate internal characteristics.  
Green symbols indicate external characteristics.



**www.igi.org**



Sample Image Used

**COLOR**

D E F G H I J Faint Very Light Light

## CLARITY

FL	IF	VVS <sup>1-2</sup>	VS <sup>1-2</sup>	SI <sup>1-2</sup>	I <sup>1-3</sup>
Flawless	Internally Flawless	Very Very Slightly Included	Very Slightly Included	Slightly Included	Included



© IGI 2020, International Gemological Institute

FD - 10 20

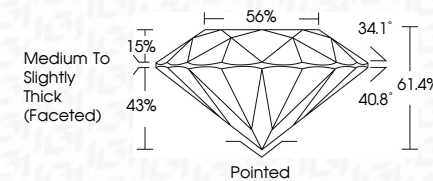


THIS DOCUMENT WAS PRODUCED WITH THE FOLLOWING SECURITY MEASURES: SPECIAL DOCUMENT PAPER, INK SCREENS, WATERMARK, BACKGROUND DESIGNS, HOLOGRAM AND OTHER SECURITY FEATURES NOT LISTED AND DO EXCEED DOCUMENT SECURITY INDUSTRY GUIDELINES

## LABORATORY GROWN DIAMOND REPORT



December 10, 2025	
IGI Report Number	LG744513502
Description	LABORATORY GROWN DIAMOND
Shape and Cutting Style	ROUND BRILLIANT
Measurements	9.59 - 9.66 X 5.90 MM
<b>GRADING RESULTS</b>	
Carat Weight	3.34 CARATS
Color Grade	D
Clarity Grade	INTERNALLY FLAWLESS
Cut Grade	IDEAL



### ADDITIONAL GRADING INFORMATION

Polish	EXCELLENT
Symmetry	EXCELLENT
Fluorescence	NONE
Inscription(s)	 LG744513502
Comments: HEARTS & ARROWS	
As Grown - No indication of post-growth treatment.	
This Laboratory Grown Diamond was created by High Pressure High Temperature (HPHT) growth process.	
Type II	



IG

December 10, 2025  
IGI Report No LG744513502  
ROUND BRILLIANT

9.99 - 9.66 X 5.00 MM		3.34 CARATS	
Carat Weight		Color Grade	D
Clarity Grade		IF	
Cut Grade		IDEAL	
Depth		61.4%	
Table		56%	
Girdle		Medium To Slightly Thick (Faceted)	
Culet		Pointed	
Polish		EXCELLENT	
Symmetry		EXCELLENT	
Fluorescence		NONE	
Identification		Gem 12741513992	

**Comments:**  
HEARTS & ARROWS  
As Grown - No Indication of post-growth  
treatment.  
This Laboratory Grown Diamond was  
created by High Pressure High  
Temperature (HPHT) growth process.