



ELECTRONIC COPY

LG744513473
Report verification at igi.org



December 8, 2025

IGI Report Number **LG744513473**

Description **LABORATORY GROWN DIAMOND**

Shape and Cutting Style **CUT CORNERED
RECTANGULAR MODIFIED
BRILLIANT**

Measurements **11.14 X 7.92 X 5.23 MM**

GRADING RESULTS

Carat Weight **3.93 CARATS**

Color Grade **D**

Clarity Grade **INTERNALLY FLAWLESS**

December 8, 2025

IGI Report Number **LG744513473**

Description **LABORATORY GROWN DIAMOND**

Shape and Cutting Style **CUT CORNERED RECTANGULAR
MODIFIED BRILLIANT**

Measurements **11.14 X 7.92 X 5.23 MM**

GRADING RESULTS

Carat Weight **3.93 CARATS**

Color Grade **D**

Clarity Grade **INTERNALLY FLAWLESS**

ADDITIONAL GRADING INFORMATION

Polish **EXCELLENT**

Symmetry **EXCELLENT**

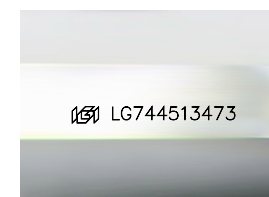
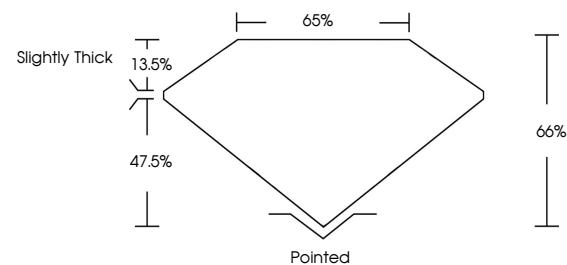
Fluorescence **NONE**

Inscription(s) **IGI LG744513473**

Comments: As Grown - No indication of post-growth treatment.

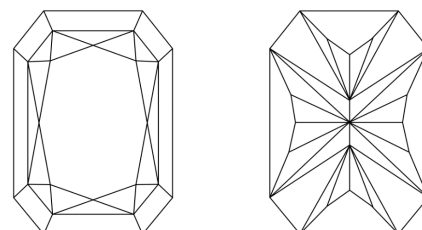
This Laboratory Grown Diamond was created by High Pressure High Temperature (HPHT) growth process. Type II

PROPORTIONS



Sample Image Used

CLARITY CHARACTERISTICS



KEY TO SYMBOLS

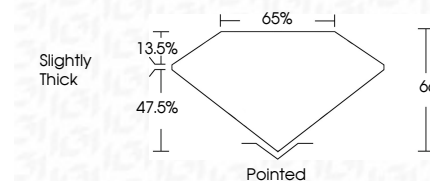
Red symbols indicate internal characteristics.
Green symbols indicate external characteristics.

COLOR

D E F G H I J Faint Very Light Light

CLARITY

FL	IF	VS ¹⁻²	VS ¹⁻²	SI ¹⁻²	I ¹⁻³
Flawless	Internally Flawless	Very Very Slightly Included	Very Slightly Included	Slightly Included	Included



ADDITIONAL GRADING INFORMATION

Polish **EXCELLENT**

Symmetry **EXCELLENT**

Fluorescence **NONE**

Inscription(s) **IGI LG744513473**

Comments: As Grown - No indication of post-growth treatment.

This Laboratory Grown Diamond was created by High Pressure High Temperature (HPHT) growth process. Type II



IGI



December 8, 2025
IGI Report No LG744513473
CUT CORNERED RECT. MODIFIED BRILLIANT
11.14 X 7.92 X 5.23 MM
3.93 CARATS
D
LF
66%
65%
Slightly Thick
Pointed
EXCELLENT
EXCELLENT
NONE
IGI LG744513473

Comments: As Grown - No indication of post-growth treatment.
This Laboratory Grown Diamond was created by High Pressure High Temperature (HPHT) growth process. Type II