



**ELECTRONIC COPY**

## LABORATORY GROWN DIAMOND REPORT

December 8, 2025	
IGI Report Number	LG744513365
Description	LABORATORY GROWN DIAMOND
Shape and Cutting Style	ROUND BRILLIANT
Measurements	8.97 - 9.00 X 5.57 MM

## GRADING RESULTS

Carat Weight	2.76 CARATS
Color Grade	D
Clarity Grade	VVS 1
Cut Grade	IDEAL

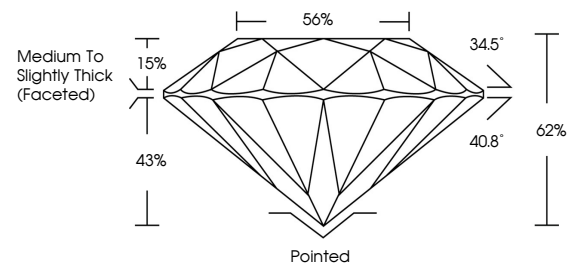
### ADDITIONAL GRADING INFORMATION

Polish	EXCELLENT
Symmetry	EXCELLENT
Fluorescence	NONE
Inscription(s)	 LG744513365

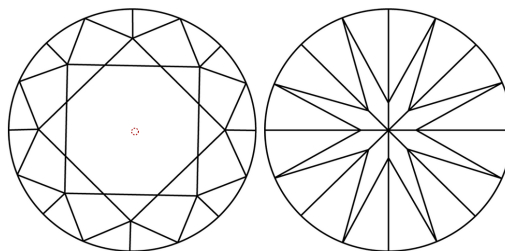
Comments: HEARTS & ARROWS  
As Grown - No indication of post-growth treatment.  
This Laboratory Grown Diamond was created by High  
Pressure High Temperature (HPHT) growth process.  
Type II

LG744513365  
Report verification at [igi.org](https://igi.org)

## PROPORTIONS

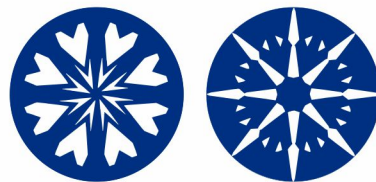


## CLARITY CHARACTERISTICS

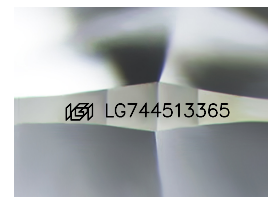


## KEY TO SYMBOLS

Red symbols indicate internal characteristics.  
Green symbols indicate external characteristics.



**www.igi.org**



Sample Image Used

## COLOR

D E F G H I J Faint Very Light Light

## CLARITY

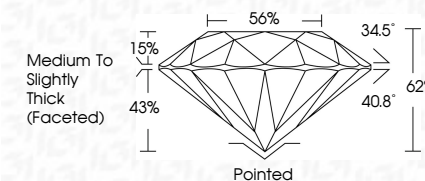
FL	IF	VVS <sup>1-2</sup>	VS <sup>1-2</sup>	SI <sup>1-2</sup>	I <sup>1-3</sup>
Flawless	Internally Flawless	Very Very Slightly Included	Very Slightly Included	Slightly Included	Included



December 8, 2025	
IGI Report Number	LG744513365
Description	LABORATORY GROWN DIAMOND
Shape and Cutting Style	ROUND BRILLIANT
Measurements	8.97 - 9.00 X 5.57 MM

## GRADING RESULTS

Carat Weight	2.76 CARATS
Color Grade	D
Clarity Grade	VVS 1
Cut Grade	IDEAL



### ADDITIONAL GRADING INFORMATION

Polish	EXCELLENT
Symmetry	EXCELLENT
Fluorescence	NONE
Inscription(s)	<del>151</del> LG744513365

Comments: HEARTS & ARROWS  
As Grown - No indication of post-growth treatment.  
This Laboratory Grown Diamond was created by High  
Pressure High Temperature (HPHT) growth process.  
Type II



IG



© IGI 2020, International Gemological Institute

FD - 10 20



THIS DOCUMENT WAS PRODUCED WITH THE FOLLOWING SECURITY MEASURES: SPECIAL DOCUMENT PAPER, INK SCREENS, WATERMARK, BACKGROUND DESIGNS, HOLOGRAM AND OTHER SECURITY FEATURES NOT LISTED AND DO EXCEED DOCUMENT SECURITY INDUSTRY GUIDELINE

December 8, 2025  
ICI Report No LG744513365  
ROUND BRILLIANT

<b>8.97 - 9.00 X 5.67 MM</b>	<b>2.76 CARATS</b>	<b>D</b>
Carat Weight	VVS 1	Pointed
Color Grade	IDEAL	EXCELLENT
Clarity Grade	62%	VERY GOOD
Cut Grade	56%	GOOD
Depth	Medium to slightly Thick (faceted)	FAIR
Table		POOR
Girdle		None
Culet		Small (0.74 x 0.34)
Polish		Excellent
Symmetry		Very Good
Fluorescence		None
Comments		

**Comments:**  
HEARTS & ARROWS  
As Grown - No Indication of post-growth  
treatment.  
This Laboratory Grown Diamond was  
credited by High Pressure High  
Temperature (HPHT) growth process.