



INTERNATIONAL GEMOLOGICAL INSTITUTE

ELECTRONIC COPY

LABORATORY GROWN DIAMOND REPORT

October 27, 2025
IGI Report Number **LG744510182**
Description **LABORATORY GROWN DIAMOND**
Shape and Cutting Style **ROUND BRILLIANT**
Measurements **4.53 - 4.55 X 2.80 MM**

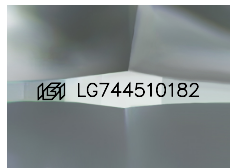
GRADING RESULTS

Carat Weight **0.35 CARAT**
Color Grade **E**
Clarity Grade **SI 1**
Cut Grade **IDEAL**

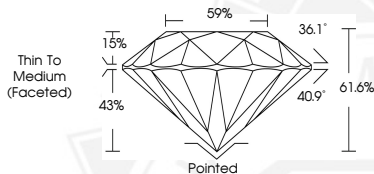
ADDITIONAL GRADING INFORMATION

Polish **EXCELLENT**
Symmetry **EXCELLENT**
Fluorescence **NONE**
Inscription(s) **IGI LG744510182**

Comments: This Laboratory Grown Diamond was created by
Chemical Vapor Deposition (CVD) growth process.
Type IIa



Sample Image Used



October 27, 2025
IGI Report Number **LG744510182**
ROUND BRILLIANT
LABORATORY GROWN DIAMOND
4.53 - 4.55 X 2.80 MM
Carat Weight **0.35 CARAT**
Color Grade **E**
Clarity Grade **SI 1**
Cut Grade **IDEAL**
Polish **EXCELLENT**
Symmetry **EXCELLENT**
Fluorescence **NONE**
Inscription(s) **IGI LG744510182**
Comments: This Laboratory Grown
Diamond was created by
Chemical Vapor Deposition (CVD)
growth process. Type IIa



October 27, 2025
IGI Report Number **LG744510182**
ROUND BRILLIANT
LABORATORY GROWN DIAMOND
4.53 - 4.55 X 2.80 MM
Carat Weight **0.35 CARAT**
Color Grade **E**
Clarity Grade **SI 1**
Cut Grade **IDEAL**
Polish **EXCELLENT**
Symmetry **EXCELLENT**
Fluorescence **NONE**
Inscription(s) **IGI LG744510182**
Comments: This Laboratory Grown
Diamond was created by
Chemical Vapor Deposition (CVD)
growth process. Type IIa



THIS DOCUMENT WAS PRODUCED WITH THE FOLLOWING SECURITY MEASURES: SPECIAL DOCUMENT PAPER, INK SCREENS, WATERMARK, BACKGROUND DESIGNS, HOLOGRAM AND OTHER SECURITY FEATURES NOT LISTED AND DO EXCEED DOCUMENT SECURITY INDUSTRY GUIDELINES.

For terms & conditions and to verify this report, please visit www.igi.org