



**ELECTRONIC COPY**

## LABORATORY GROWN DIAMOND REPORT

LG744507508  
Report verification at [igi.org](https://igi.org)

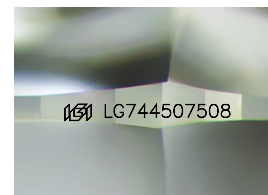
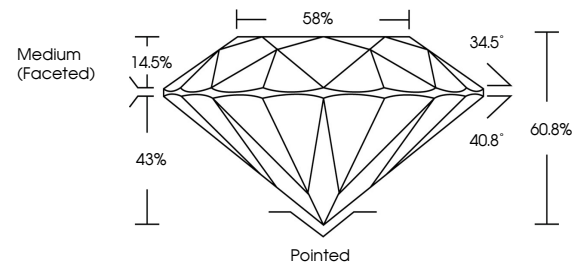
October 27, 2025	
IGI Report Number	LG744507508
Description	LABORATORY GROWN DIAMOND
Shape and Cutting Style	ROUND BRILLIANT
Measurements	9.07 - 9.11 X 5.53 MM
GRADING RESULTS	
Carat Weight	2.79 CARATS
Color Grade	E
Clarity Grade	VS 1
Cut Grade	IDEAL

### ADDITIONAL GRADING INFORMATION

Polish	EXCELLENT
Symmetry	EXCELLENT
Fluorescence	NONE
Inscription(s)	 LG744507508

Comments: This Laboratory Grown Diamond was created by Chemical Vapor Deposition (CVD) growth process.  
Type IIa

## PROPORTIONS



Sample Image Used

## COLOR

D E F G H I J Faint Very Light Light

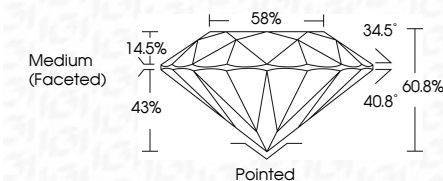
## CLARITY

FL	IF	VVS <sup>1-2</sup>	VS <sup>1-2</sup>	SI <sup>1-2</sup>	I <sup>1-3</sup>
Flawless	Internally Flawless	Very Very Slightly Included	Very Slightly Included	Slightly Included	Included

## LABORATORY GROWN DIAMOND REPORT



October 27, 2025	
IGI Report Number	LG744507508
Description	LABORATORY GROWN DIAMOND
Shape and Cutting Style	ROUND BRILLIANT
Measurements	9.07 - 9.11 X 5.53 MM
GRADING RESULTS	
Carat Weight	2.79 CARATS
Color Grade	E
Clarity Grade	VS 1
Cut Grade	IDEAL



### ADDITIONAL GRADING INFORMATION

Polish	EXCELLENT
Symmetry	EXCELLENT
Fluorescence	NONE
Inscription(s)	 LG744507508
<p>Comments: This Laboratory Grown Diamond was created by Chemical Vapor Deposition (CVD) growth process.</p> <p>Type IIa</p>	



© IGI 2020, International Gemological Institute

FD - 10 20



THIS DOCUMENT WAS PRODUCED WITH THE FOLLOWING SECURITY MEASURES: SPECIAL DOCUMENT PAPER, INK SCREENS, WATERMARK, BACKGROUND DESIGNS, HOLOGRAM AND OTHER SECURITY FEATURES NOT LISTED AND DO EXCEED DOCUMENT SECURITY INDUSTRY GUIDELINES

**www.igi.org**

October 27, 2025  
GI Report No LG744507508  
ROUND BRILLIANT

2.07 - 9.11 X 5.53 MM

2.07 - 9.11 X 5.53 MM

Color Grade

Clarity Grade	VS 1
VS 1	

Cut Grade	IDEAL
Depth	60.8%

Dep III	61.6%
Table	58%

Girdle

Culet	Pointed
-------	---------

Quiet	Pointed
Polish	EXCELLENT

	EXCELLENT	NONE
Symmetry		
Fluorescence		

Fluorescence	None
Inscription(s)	151 LG744507508

Comments:

**Comments:**  
This Laboratory Grown Diamond was  
created by Chemical Vapor Deposition

created by Chemical Vapor Deposition (CVD) growth process.

Type IIa