



**ELECTRONIC COPY**

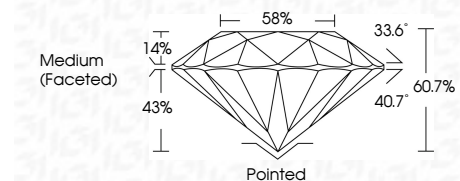
LG744505617  
Report verification at igi.org



October 17, 2025  
IGI Report Number **LG744505617**  
Description **LABORATORY GROWN DIAMOND**  
Shape and Cutting Style **ROUND BRILLIANT**  
Measurements **8.81 - 8.85 X 5.35 MM**

**GRADING RESULTS**

Carat Weight **2.57 CARATS**  
Color Grade **E**  
Clarity Grade **VVS 2**  
Cut Grade **IDEAL**

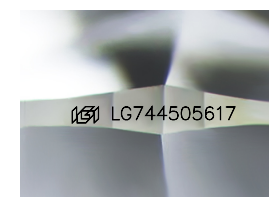


**ADDITIONAL GRADING INFORMATION**

Polish **EXCELLENT**  
Symmetry **EXCELLENT**  
Fluorescence **NONE**  
Inscription(s) **IGI LG744505617**  
Comments: This Laboratory Grown Diamond was created by Chemical Vapor Deposition (CVD) growth process. Type IIa

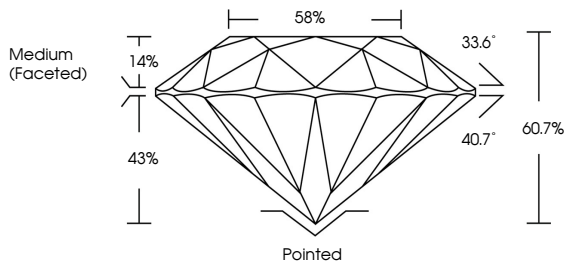


October 17, 2025  
IGI Report No **LG744505617**  
**ROUND BRILLIANT**  
**8.81 - 8.85 X 5.35 MM**  
**2.57 CARATS**  
**E**  
**VVS 2**  
**IDEAL**  
**60.7%**  
**58%**  
Medium (Faceted)  
Pointed  
**EXCELLENT**  
**EXCELLENT**  
**NONE**  
**IGI LG744505617**  
Comments: This Laboratory Grown Diamond was created by Chemical Vapor Deposition (CVD) growth process. Type IIa

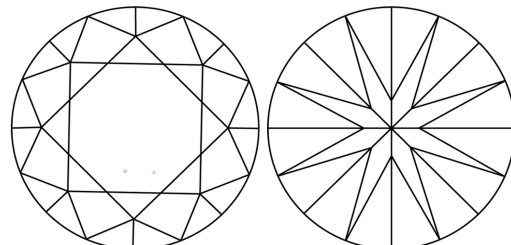


Sample Image Used

**PROPORTIONS**



**CLARITY CHARACTERISTICS**



**KEY TO SYMBOLS**

Red symbols indicate internal characteristics.  
Green symbols indicate external characteristics.

**COLOR**

D E F G H I J Faint Very Light Light

**CLARITY**

FL	IF	VVS <sup>1-2</sup>	VS <sup>1-2</sup>	SI <sup>1-2</sup>	I <sup>1-3</sup>
Flawless	Internally Flawless	Very Very Slightly Included	Very Slightly Included	Slightly Included	Included

