



ELECTRONIC COPY

LG744505001
Report verification at igi.org



October 30, 2025

IGI Report Number **LG744505001**

Description **LABORATORY GROWN DIAMOND**

Shape and Cutting Style **ROUND BRILLIANT**

Measurements **9.71 - 9.77 X 6.06 MM**

GRADING RESULTS

Carat Weight **3.57 CARATS**

Color Grade **E**

Clarity Grade **VS 1**

Cut Grade **IDEAL**

October 30, 2025

IGI Report Number **LG744505001**

Description **LABORATORY GROWN DIAMOND**

Shape and Cutting Style **ROUND BRILLIANT**

Measurements **9.71 - 9.77 X 6.06 MM**

GRADING RESULTS

Carat Weight **3.57 CARATS**

Color Grade **E**

Clarity Grade **VS 1**

Cut Grade **IDEAL**

ADDITIONAL GRADING INFORMATION

Polish **EXCELLENT**

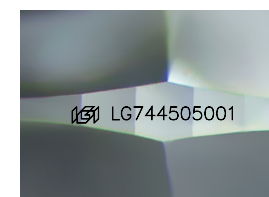
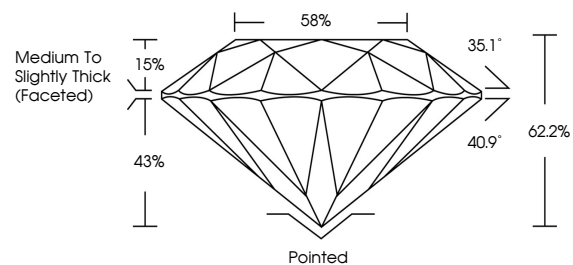
Symmetry **EXCELLENT**

Fluorescence **NONE**

Inscription(s) **IGI LG744505001**

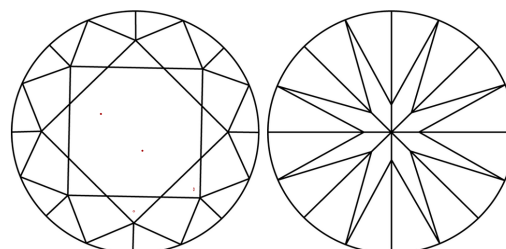
Comments: This Laboratory Grown Diamond was created by Chemical Vapor Deposition (CVD) growth process. Type IIa

PROPORTIONS



Sample Image Used

CLARITY CHARACTERISTICS



KEY TO SYMBOLS

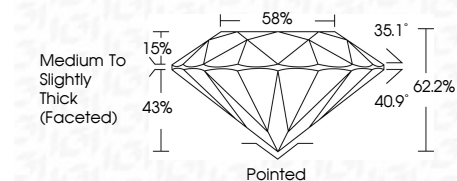
Red symbols indicate internal characteristics.
Green symbols indicate external characteristics.

COLOR

D E F G H I J Faint Very Light Light

CLARITY

| FL | IF | VS ¹⁻² | VS ¹⁻² | SI ¹⁻² | I ¹⁻³ |
|----------|---------------------|-----------------------------|------------------------|-------------------|------------------|
| Flawless | Internally Flawless | Very Very Slightly Included | Very Slightly Included | Slightly Included | Included |



ADDITIONAL GRADING INFORMATION

Polish **EXCELLENT**

Symmetry **EXCELLENT**

Fluorescence **NONE**

Inscription(s) **IGI LG744505001**

Comments: This Laboratory Grown Diamond was created by Chemical Vapor Deposition (CVD) growth process. Type IIa



IGI



| | | | | | | | | | | | | | | | |
|------------------|---------------------------|-----------------|-----------------------|-------------|-----|------|-------|-------|-----|------------------------------------|---------|-----------|-----------|------|-----------------|
| October 30, 2025 | IGI Report No LG744505001 | ROUND BRILLIANT | 9.71 - 9.77 X 6.06 MM | 3.57 CARATS | E | VS 1 | IDEAL | 62.2% | 58% | Medium To Slightly Thick (Faceted) | Pointed | EXCELLENT | EXCELLENT | NONE | IGI LG744505001 |
| IGI | IGI | IGI | IGI | IGI | IGI | IGI | IGI | IGI | IGI | IGI | IGI | IGI | IGI | IGI | IGI |

Comments: This Laboratory Grown Diamond was created by Chemical Vapor Deposition (CVD) growth process. Type IIa