



**LABORATORY GROWN DIAMOND REPORT**

November 6, 2025  
 IGI Report Number **LG744504209**  
 Description **LABORATORY GROWN DIAMOND**  
 Shape and Cutting Style **HEXAGONAL MIXED CUT**  
 Measurements **6.41 X 5.55 X 3.76 MM**

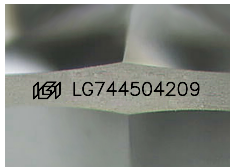
**GRADING RESULTS**

Carat Weight **0.98 CARAT**  
 Color Grade **FANCY VIVID PINK**  
 Clarity Grade **VVS 2**

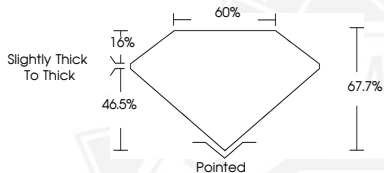
**ADDITIONAL GRADING INFORMATION**

Polish **VERY GOOD**  
 Symmetry **VERY GOOD**  
 Fluorescence **STRONG**  
 Inscription(s) **IGI LG744504209**

Comments: This Laboratory Grown Diamond was created by  
 Chemical Vapor Deposition (CVD) growth process.  
 Indications of post-growth treatment.



Sample Image Used



November 6, 2025  
 IGI Report Number **LG744504209**  
 HEXAGONAL MIXED CUT  
 LABORATORY GROWN DIAMOND  
 6.41 X 5.55 X 3.76 MM  
 Carat Weight **0.98 CARAT**  
 Color Grade **FANCY VIVID PINK**  
 Clarity Grade **VVS 2**  
 Polish **VERY GOOD**  
 Symmetry **VERY GOOD**  
 Fluorescence **STRONG**  
 Inscription(s) **IGI LG744504209**

Comments: This Laboratory Grown  
 Diamond was created by  
 Chemical Vapor Deposition (CVD)  
 growth process. Indications of  
 post-growth treatment.



November 6, 2025  
 IGI Report Number **LG744504209**  
 HEXAGONAL MIXED CUT  
 LABORATORY GROWN DIAMOND  
 6.41 X 5.55 X 3.76 MM  
 Carat Weight **0.98 CARAT**  
 Color Grade **FANCY VIVID PINK**  
 Clarity Grade **VVS 2**  
 Polish **VERY GOOD**  
 Symmetry **VERY GOOD**  
 Fluorescence **STRONG**  
 Inscription(s) **IGI LG744504209**

Comments: This Laboratory Grown  
 Diamond was created by  
 Chemical Vapor Deposition (CVD)  
 growth process. Indications of  
 post-growth treatment.



THIS DOCUMENT WAS PRODUCED WITH THE FOLLOWING SECURITY MEASURES: SPECIAL DOCUMENT PAPER, INK SCREENS, WATERMARK, BACKGROUND DESIGNS, HOLOGRAM AND OTHER SECURITY FEATURES NOT LISTED AND DO EXCEED DOCUMENT SECURITY INDUSTRY GUIDELINES.