



ELECTRONIC COPY

LG744502473
Report verification at igi.org



November 3, 2025
IGI Report Number **LG744502473**
Description **LABORATORY GROWN DIAMOND**
Shape and Cutting Style **CUSHION MODIFIED BRILLIANT**
Measurements **13.40 X 8.39 X 6.05 MM**
GRADING RESULTS
Carat Weight **6.09 CARATS**
Color Grade **FANCY VIVID YELLOW**
Clarity Grade **VS 1**

November 3, 2025
IGI Report Number **LG744502473**
Description **LABORATORY GROWN DIAMOND**
Shape and Cutting Style **CUSHION MODIFIED BRILLIANT**
Measurements **13.40 X 8.39 X 6.05 MM**

GRADING RESULTS

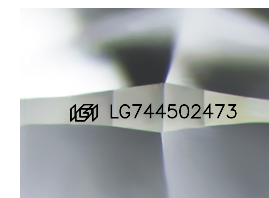
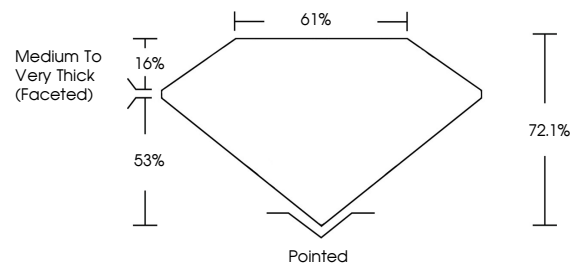
Carat Weight **6.09 CARATS**
Color Grade **FANCY VIVID YELLOW**
Clarity Grade **VS 1**

ADDITIONAL GRADING INFORMATION

Polish **EXCELLENT**
Symmetry **EXCELLENT**
Fluorescence **NONE**
Inscription(s) **IGI LG744502473**

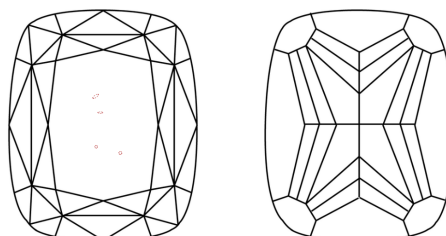
Comments: This Laboratory Grown Diamond was created by Chemical Vapor Deposition (CVD) growth process.

PROPORTIONS



Sample Image Used

CLARITY CHARACTERISTICS



KEY TO SYMBOLS

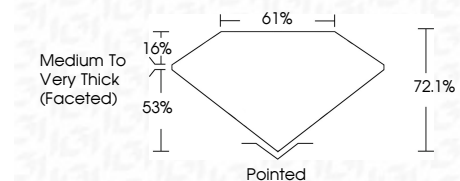
Red symbols indicate internal characteristics.
Green symbols indicate external characteristics.

COLOR

D E F G H I J Faint Very Light Light

CLARITY

FL	IF	VS ¹⁻²	VS ¹⁻²	SI ¹⁻²	I ¹⁻³
Flawless	Internally Flawless	Very Very Slightly Included	Very Slightly Included	Slightly Included	Included



ADDITIONAL GRADING INFORMATION

Polish **EXCELLENT**
Symmetry **EXCELLENT**
Fluorescence **NONE**
Inscription(s) **IGI LG744502473**
Comments: This Laboratory Grown Diamond was created by Chemical Vapor Deposition (CVD) growth process.



November 3, 2025
IGI Report No **LG744502473**
CUSHION MODIFIED BRILLIANT
13.40 X 8.39 X 6.05 MM
Carat Weight **6.09 CARATS**
Color Grade **FANCY VIVID YELLOW**
Clarity Grade **VS 1**
Depth **72.1%**
Table **61%**
Girdle **Medium to Very Thick (Faceted)**
Culet **Pointed**
Polish **EXCELLENT**
Symmetry **EXCELLENT**
Fluorescence **NONE**
Inscription(s) **IGI LG744502473**
Comments: This Laboratory Grown Diamond was created by Chemical Vapor Deposition (CVD) growth process.