



**ELECTRONIC COPY**

LG743595719  
Report verification at igi.org



November 10, 2025

IGI Report Number **LG743595719**

Description **LABORATORY GROWN DIAMOND**

Shape and Cutting Style **ROUND BRILLIANT**

Measurements **11.72 - 11.80 X 7.11 MM**

**GRADING RESULTS**

Carat Weight **6.07 CARATS**

Color Grade **G**

Clarity Grade **VVS 2**

Cut Grade **IDEAL**

November 10, 2025  
IGI Report Number **LG743595719**  
Description **LABORATORY GROWN DIAMOND**  
Shape and Cutting Style **ROUND BRILLIANT**  
Measurements **11.72 - 11.80 X 7.11 MM**

**GRADING RESULTS**

Carat Weight **6.07 CARATS**

Color Grade **G**

Clarity Grade **VVS 2**

Cut Grade **IDEAL**

**ADDITIONAL GRADING INFORMATION**

Polish **EXCELLENT**

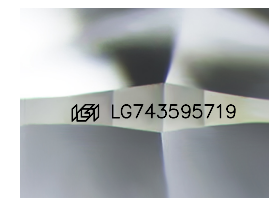
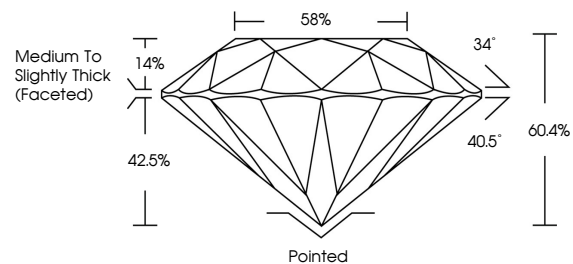
Symmetry **EXCELLENT**

Fluorescence **NONE**

Inscription(s) **IGI LG743595719**

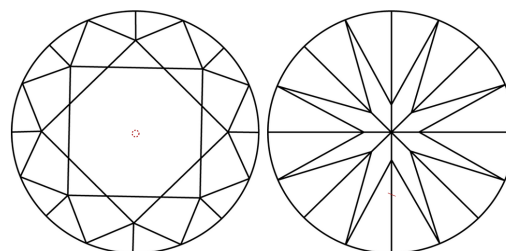
Comments: This Laboratory Grown Diamond was created by Chemical Vapor Deposition (CVD) growth process. Type IIa

**PROPORTIONS**



Sample Image Used

**CLARITY CHARACTERISTICS**



**KEY TO SYMBOLS**

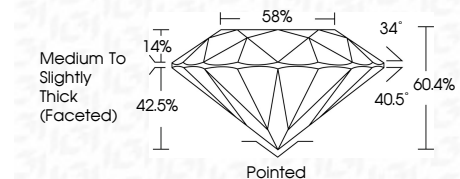
Red symbols indicate internal characteristics.  
Green symbols indicate external characteristics.

**COLOR**

D E F G H I J Faint Very Light Light

**CLARITY**

FL	IF	VVS <sup>1-2</sup>	VS <sup>1-2</sup>	SI <sup>1-2</sup>	I <sup>1-3</sup>
Flawless	Internally Flawless	Very Very Slightly Included	Very Slightly Included	Slightly Included	Included



**ADDITIONAL GRADING INFORMATION**

Polish **EXCELLENT**

Symmetry **EXCELLENT**

Fluorescence **NONE**

Inscription(s) **IGI LG743595719**

Comments: This Laboratory Grown Diamond was created by Chemical Vapor Deposition (CVD) growth process. Type IIa



**IGI**



November 10, 2025	IGI Report No LG743595719	ROUND BRILLIANT
11.72 - 11.80 X 7.11 MM	6.07 CARATS	G
Color Grade	VVS 2	IDEAL
Clarity Grade	60.4%	58%
Cut Grade	Medium To Slightly Thick (Faceted)	Pointed
Polish	EXCELLENT	EXCELLENT
Symmetry	EXCELLENT	NONE
Fluorescence	NONE	IGI LG743595719
Inscription(s)		

Comments: This Laboratory Grown Diamond was created by Chemical Vapor Deposition (CVD) growth process. Type IIa