



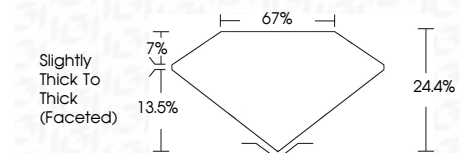
ELECTRONIC COPY

LG743594553
Report verification at igi.org



November 3, 2025
IGI Report Number **LG743594553**
Description **LABORATORY GROWN DIAMOND**
Shape and Cutting Style **ROSE CUT**
Measurements **9.80 X 9.87 X 2.40 MM**

GRADING RESULTS
Carat Weight **2.00 CARATS**
Color Grade **E**
Clarity Grade **VS 1**



ADDITIONAL GRADING INFORMATION
Polish **EXCELLENT**
Symmetry **VERY GOOD**
Fluorescence **NONE**
Inscription(s) **IGI LG743594553**
Comments: This Laboratory Grown Diamond was created by Chemical Vapor Deposition (CVD) growth process. Type IIa



November 3, 2025
IGI Report No **LG743594553**
ROSE CUT
2.00 CARATS
Carat Weight **E**
Color Grade **VS 1**
Clarity Grade **24.4%**
Depth **67%**
Table **Slightly Thick To Thick (Faceted)**
Girdle **EXCELLENT**
Culet **VERY GOOD**
Polish **NONE**
Symmetry **IGI LG743594553**
Fluorescence
Inscription(s)

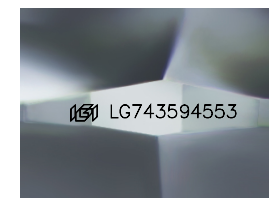
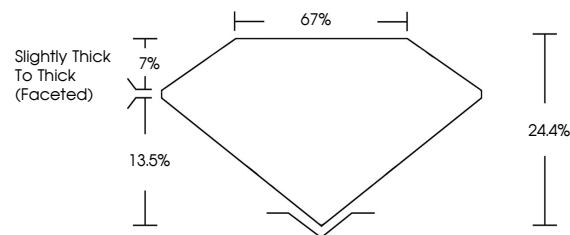
Comments: This Laboratory Grown Diamond was created by Chemical Vapor Deposition (CVD) growth process. Type IIa

November 3, 2025
IGI Report Number **LG743594553**
Description **LABORATORY GROWN DIAMOND**
Shape and Cutting Style **ROSE CUT**
Measurements **9.80 X 9.87 X 2.40 MM**

GRADING RESULTS
Carat Weight **2.00 CARATS**
Color Grade **E**
Clarity Grade **VS 1**

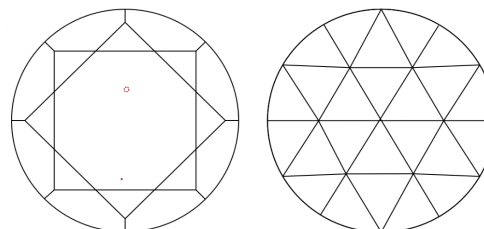
ADDITIONAL GRADING INFORMATION
Polish **EXCELLENT**
Symmetry **VERY GOOD**
Fluorescence **NONE**
Inscription(s) **IGI LG743594553**
Comments: This Laboratory Grown Diamond was created by Chemical Vapor Deposition (CVD) growth process. Type IIa

PROPORTIONS



Sample Image Used

CLARITY CHARACTERISTICS



KEY TO SYMBOLS

Red symbols indicate internal characteristics.
Green symbols indicate external characteristics.

COLOR

D E F G H I J Faint Very Light Light

CLARITY

FL	IF	VS ¹⁻²	VS ¹⁻²	SI ¹⁻²	I ¹⁻³
Flawless	Internally Flawless	Very Very Slightly Included	Very Slightly Included	Slightly Included	Included

