



ELECTRONIC COPY

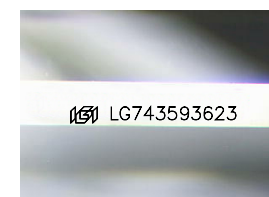
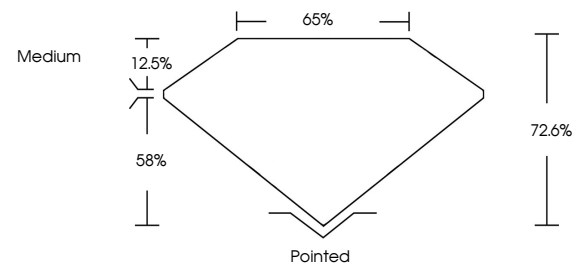
LG743593623
Report verification at igi.org



December 10, 2025
IGI Report Number **LG743593623**
Description **LABORATORY GROWN DIAMOND**
Shape and Cutting Style **PRINCESS CUT**
Measurements **10.07 X 10.00 X 7.26 MM**
GRADING RESULTS
Carat Weight **6.20 CARATS**
Color Grade **D**
Clarity Grade **INTERNALLY FLAWLESS**

December 10, 2025
IGI Report Number **LG743593623**
Description **LABORATORY GROWN DIAMOND**
Shape and Cutting Style **PRINCESS CUT**
Measurements **10.07 X 10.00 X 7.26 MM**

PROPORTIONS

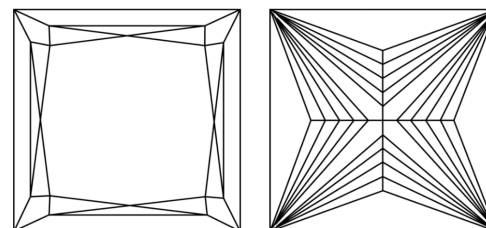


Sample Image Used

GRADING RESULTS

Carat Weight **6.20 CARATS**
Color Grade **D**
Clarity Grade **INTERNALLY FLAWLESS**

CLARITY CHARACTERISTICS



KEY TO SYMBOLS

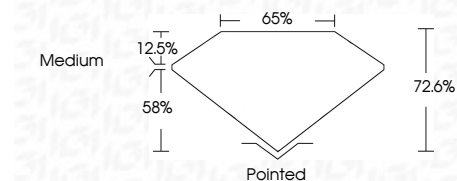
Red symbols indicate internal characteristics.
Green symbols indicate external characteristics.

COLOR

D E F G H I J Faint Very Light Light

CLARITY

FL	IF	VS ¹⁻²	VS ¹⁻²	SI ¹⁻²	I ¹⁻³
Flawless	Internally Flawless	Very Very Slightly Included	Very Slightly Included	Slightly Included	Included



ADDITIONAL GRADING INFORMATION

Polish **EXCELLENT**
Symmetry **EXCELLENT**
Fluorescence **NONE**
Inscription(s) **IGI LG743593623**
Comments: As Grown - No indication of post-growth treatment.
This Laboratory Grown Diamond was created by High Pressure High Temperature (HPHT) growth process.
Type II

ADDITIONAL GRADING INFORMATION

Polish **EXCELLENT**
Symmetry **EXCELLENT**
Fluorescence **NONE**
Inscription(s) **IGI LG743593623**

Comments: As Grown - No indication of post-growth treatment.
This Laboratory Grown Diamond was created by High Pressure High Temperature (HPHT) growth process.
Type II



December 10, 2025
IGI Report No LG743593623
PRINCESS CUT
6.20 CARATS
D
6.20 CARATS
D
10.07 X 10.00 X 7.26 MM
Color Grade
Clarity Grade
Table
Girdle
Medium
Pointed
EXCELLENT
EXCELLENT
NONE
IGI LG743593623
Comments: As Grown - No indication of post-growth treatment.
This Laboratory Grown Diamond was created by High Pressure High Temperature (HPHT) growth process.
Type II