

**ELECTRONIC COPY**

## LABORATORY GROWN DIAMOND REPORT

December 8, 2025	
IGI Report Number	LG743593379
Description	LABORATORY GROWN DIAMOND
Shape and Cutting Style	PRINCESS CUT
Measurements	7.23 X 7.22 X 5.09 MM

## GRADING RESULTS

Carat Weight	2.26 CARATS
Color Grade	D
Clarity Grade	INTERNALLY FLAWLESS

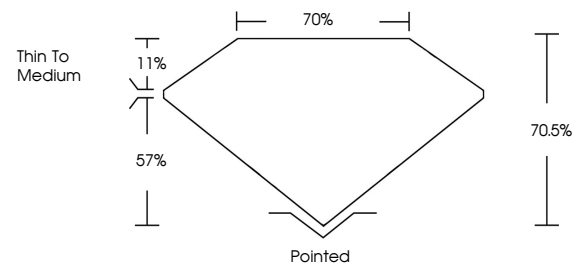
### ADDITIONAL GRADING INFORMATION

Polish	EXCELLENT
Symmetry	EXCELLENT
Fluorescence	NONE
Inscription(s)	 LG743593379

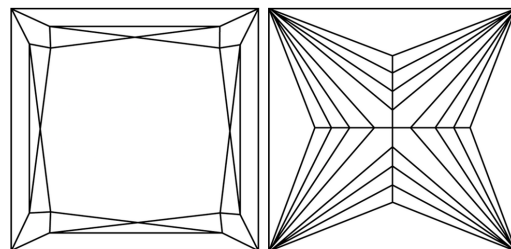
Comments: As Grown - No indication of post-growth treatment.  
This Laboratory Grown Diamond was created by High Pressure High Temperature (HPHT) growth process.  
Type II

LG743593379  
Report verification at [igi.org](https://igi.org)

## PROPORTIONS

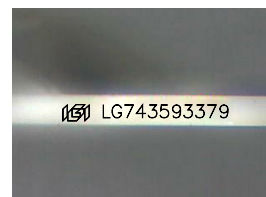


## CLARITY CHARACTERISTICS



## KEY TO SYMBOLS

Red symbols indicate internal characteristics.  
Green symbols indicate external characteristics.



Sample Image Used

## COLOR

D E F G H I J Faint Very Light Light

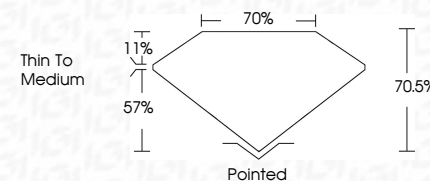
## CLARITY

FL	IF	VVS <sup>1-2</sup>	VS <sup>1-2</sup>	SI <sup>1-2</sup>	I <sup>1-3</sup>
Flawless	Internally Flawless	Very Very Slightly Included	Very Slightly Included	Slightly Included	Included

## LABORATORY GROWN DIAMOND REPORT



December 8, 2025	
IGI Report Number	LG743593379
Description	LABORATORY GROWN DIAMOND
Shape and Cutting Style	PRINCESS CUT
Measurements	7.23 X 7.22 X 5.09 MM
GRADING RESULTS	
Carat Weight	2.26 CARATS
Color Grade	D
Clarity Grade	INTERNALLY FLAWLESS



### ADDITIONAL GRADING INFORMATION

Polish	EXCELLENT
Symmetry	EXCELLENT
Fluorescence	NONE
Inscription(s)	<del>LG</del> LG743593379
Comments: As Grown - No indication of post-growth treatment.	
This Laboratory Grown Diamond was created by High Pressure High Temperature (HPHT) growth process.	
Type II	



December 8, 2025  
IGI Report No LG743593379  
PRINCESS CIT

Carat Weight	2.26 CARATS
Color Grade	D
Cutty Grade	IF
Depth	70.6%
Table	70%
Girdle	Thin To Medium
Culet	Pointed
Polish	EXCELLENT
Symmetry	EXCELLENT
Fluorescence	NONE
Inscriptions(s)	4881127493939392

Comments:  
As Grown - No Indication of post-growth  
treatment.  
This Laboratory Grown Diamond was  
created by High Pressure High  
Temperature (HPHT) growth process.  
Type II