



ELECTRONIC COPY

LG743593296
Report verification at igi.org



December 4, 2025

IGI Report Number **LG743593296**

Description **LABORATORY GROWN DIAMOND**

Shape and Cutting Style **OVAL BRILLIANT**

Measurements **11.36 X 8.08 X 5.09 MM**

GRADING RESULTS

Carat Weight **3.01 CARATS**

Color Grade **D**

Clarity Grade **VVS 1**

December 4, 2025
IGI Report Number **LG743593296**
Description **LABORATORY GROWN DIAMOND**
Shape and Cutting Style **OVAL BRILLIANT**
Measurements **11.36 X 8.08 X 5.09 MM**

GRADING RESULTS

Carat Weight **3.01 CARATS**

Color Grade **D**

Clarity Grade **VVS 1**

ADDITIONAL GRADING INFORMATION

Polish **EXCELLENT**

Symmetry **EXCELLENT**

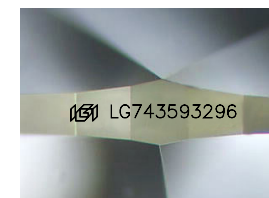
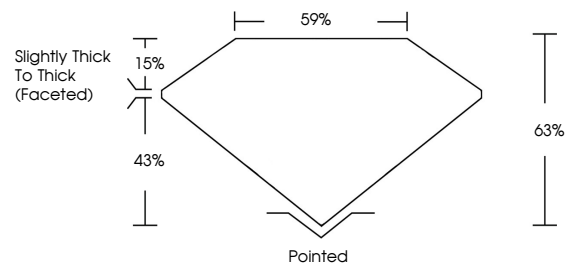
Fluorescence **NONE**

Inscription(s) **IGI LG743593296**

Comments: As Grown - No indication of post-growth treatment.

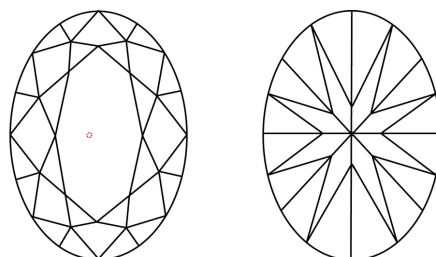
This Laboratory Grown Diamond was created by High Pressure High Temperature (HPHT) growth process. Type II

PROPORTIONS



Sample Image Used

CLARITY CHARACTERISTICS



KEY TO SYMBOLS

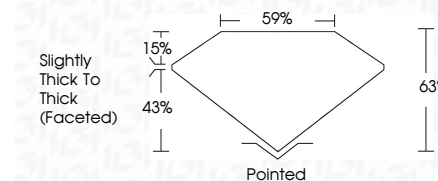
Red symbols indicate internal characteristics.
Green symbols indicate external characteristics.

COLOR

D E F G H I J Faint Very Light Light

CLARITY

FL	IF	VVS ¹⁻²	VS ¹⁻²	SI ¹⁻²	I ¹⁻³
Flawless	Internally Flawless	Very Very Slightly Included	Very Slightly Included	Slightly Included	Included



ADDITIONAL GRADING INFORMATION

Polish **EXCELLENT**

Symmetry **EXCELLENT**

Fluorescence **NONE**

Inscription(s) **IGI LG743593296**

Comments: As Grown - No indication of post-growth treatment.

This Laboratory Grown Diamond was created by High Pressure High Temperature (HPHT) growth process. Type II



IGI



December 4, 2025
IGI Report No LG743593296
OVAL BRILLIANT
3.01 CARATS
D
11.36 X 8.08 X 5.09 MM
Carat Weight
Color Grade
Clarity Grade
Depth
Table
Girdle
Slightly Thick To Thick (Faceted)
Pointed
Polish
Symmetry
Fluorescence
Inscription(s)
EXCELLENT
EXCELLENT
NONE
IGI LG743593296
Comments: As Grown - No indication of post-growth treatment.
This Laboratory Grown Diamond was created by High Pressure High Temperature (HPHT) growth process. Type II