



ELECTRONIC COPY

LG743593247
Report verification at igi.org



November 12, 2025
IGI Report Number **LG743593247**
Description **LABORATORY GROWN DIAMOND**
Shape and Cutting Style **ROUND BRILLIANT**
Measurements **6.50 - 6.53 X 3.91 MM**
GRADING RESULTS
Carat Weight **1.00 CARAT**
Color Grade **FANCY VIVID BLUE**
Clarity Grade **VS 2**
Cut Grade **EXCELLENT**

LABORATORY GROWN DIAMOND REPORT

November 12, 2025
IGI Report Number **LG743593247**
Description **LABORATORY GROWN DIAMOND**
Shape and Cutting Style **ROUND BRILLIANT**
Measurements **6.50 - 6.53 X 3.91 MM**

GRADING RESULTS

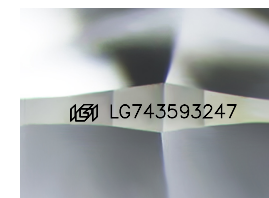
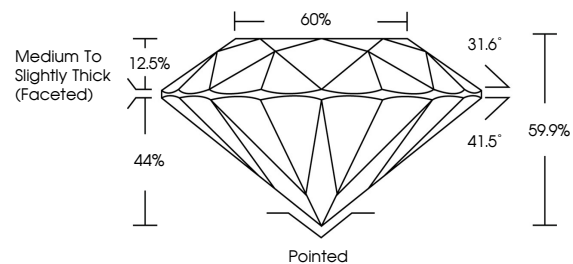
Carat Weight **1.00 CARAT**
Color Grade **FANCY VIVID BLUE**
Clarity Grade **VS 2**
Cut Grade **EXCELLENT**

ADDITIONAL GRADING INFORMATION

Polish **EXCELLENT**
Symmetry **EXCELLENT**
Fluorescence **NONE**
Inscription(s) **IGI LG743593247**

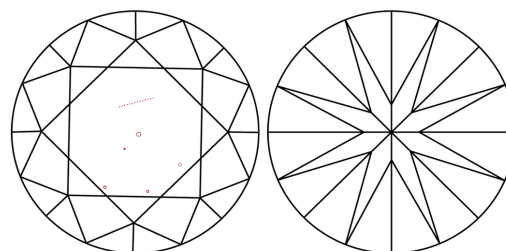
Comments: This Laboratory Grown Diamond was created by Chemical Vapor Deposition (CVD) growth process.
Type IIa. Indications of post-growth treatment.

PROPORTIONS



Sample Image Used

CLARITY CHARACTERISTICS



KEY TO SYMBOLS

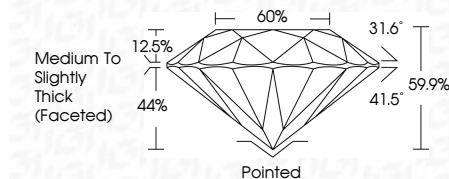
Red symbols indicate internal characteristics.
Green symbols indicate external characteristics.

COLOR

D E F G H I J Faint Very Light Light

CLARITY

FL	IF	VS ¹⁻²	VS ¹⁻²	SI ¹⁻²	I ¹⁻³
Flawless	Internally Flawless	Very Very Slightly Included	Very Slightly Included	Slightly Included	Included



ADDITIONAL GRADING INFORMATION

Polish **EXCELLENT**
Symmetry **EXCELLENT**
Fluorescence **NONE**
Inscription(s) **IGI LG743593247**
Comments: This Laboratory Grown Diamond was created by Chemical Vapor Deposition (CVD) growth process.
Type IIa. Indications of post-growth treatment.



IGI



November 12, 2025
IGI Report No. LG743593247
ROUND BRILLIANT
6.50 - 6.53 X 3.91 MM
1.00 CARAT
FANCY VIVID BLUE
VS 2
EXCELLENT
60%
Medium To Slightly Thick (Faceted)
Pointed
EXCELLENT
EXCELLENT
NONE
IGI LG743593247
Comments: This Laboratory Grown Diamond was created by Chemical Vapor Deposition (CVD) growth process.
Type IIa. Indications of post-growth treatment.