



ELECTRONIC COPY

LG743590020
Report verification at igi.org

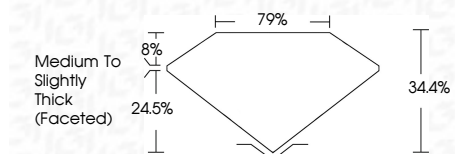


November 15, 2025
IGI Report Number **LG743590020**
Description **LABORATORY GROWN DIAMOND**

Shape and Cutting Style **PEAR ROSE CUT**
Measurements **13.89 X 8.35 X 2.87 MM**

GRADING RESULTS

Carat Weight **2.47 CARATS**
Color Grade **F**
Clarity Grade **VVS 2**



ADDITIONAL GRADING INFORMATION

Polish **EXCELLENT**
Symmetry **VERY GOOD**
Fluorescence **NONE**
Inscription(s) **IGI LG743590020**
Comments: This Laboratory Grown Diamond was created by Chemical Vapor Deposition (CVD) growth process. Type IIa



November 15, 2025
IGI Report No LG743590020
PEAR ROSE CUT
13.89 X 8.35 X 2.87 MM
2.47 CARATS
Color Grade **F**
Clarity Grade **VVS 2**
Depth **34.4%**
Table **79%**
Girdle **Medium to Slightly Thick (Faceted)**
Culet **EXCELLENT**
Polish **VERY GOOD**
Symmetry **NONE**
Fluorescence **NONE**
Inscription(s) **IGI LG743590020**
Comments: This Laboratory Grown Diamond was created by Chemical Vapor Deposition (CVD) growth process. Type IIa

LABORATORY GROWN DIAMOND REPORT

November 15, 2025
IGI Report Number **LG743590020**
Description **LABORATORY GROWN DIAMOND**
Shape and Cutting Style **PEAR ROSE CUT**
Measurements **13.89 X 8.35 X 2.87 MM**

GRADING RESULTS

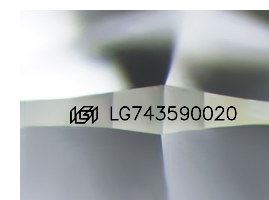
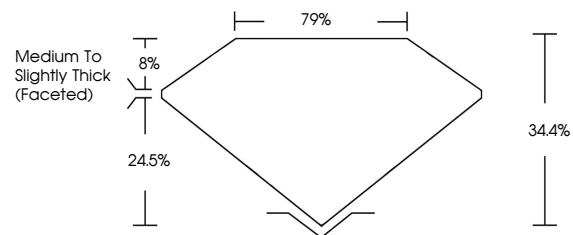
Carat Weight **2.47 CARATS**
Color Grade **F**
Clarity Grade **VVS 2**

ADDITIONAL GRADING INFORMATION

Polish **EXCELLENT**
Symmetry **VERY GOOD**
Fluorescence **NONE**
Inscription(s) **IGI LG743590020**

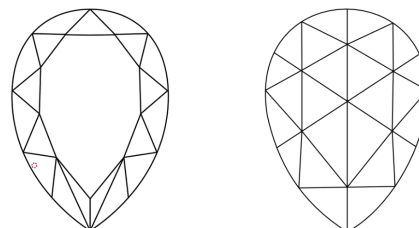
Comments: This Laboratory Grown Diamond was created by Chemical Vapor Deposition (CVD) growth process. Type IIa

PROPORTIONS



Sample Image Used

CLARITY CHARACTERISTICS



KEY TO SYMBOLS

Red symbols indicate internal characteristics.
Green symbols indicate external characteristics.

COLOR

D E F G H I J Faint Very Light Light

CLARITY

FL	IF	VVS ¹⁻²	VS ¹⁻²	SI ¹⁻²	I ¹⁻³
Flawless	Internally Flawless	Very Very Slightly Included	Very Slightly Included	Slightly Included	Included

