



ELECTRONIC COPY

LABORATORY GROWN DIAMOND REPORT

November 7, 2025	
IGI Report Number	LG743589735
Description	LABORATORY GROWN DIAMOND
Shape and Cutting Style	PRINCESS CUT
Measurements	5.37 X 5.34 X 3.93 MM

GRADING RESULTS

Carat Weight	1.00 CARAT
Color Grade	D
Clarity Grade	VVS 1

ADDITIONAL GRADING INFORMATION

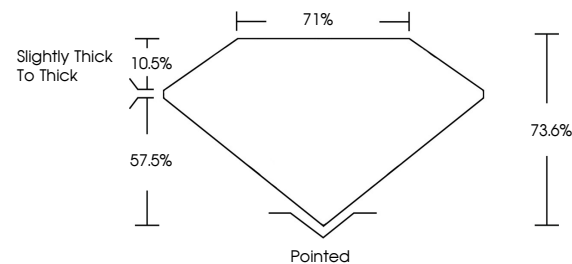
Polish	EXCELLENT
Symmetry	EXCELLENT
Fluorescence	NONE
Inscription(s)	 LG743589735

Comments: As Grown - No indication of post-growth treatment.

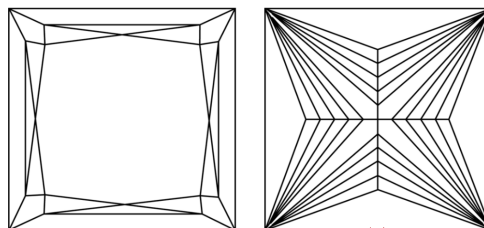
This Laboratory Grown Diamond was created by High Pressure High Temperature (HPHT) growth process.
Type II

LG743589735
Report verification at igi.org

PROPORTIONS

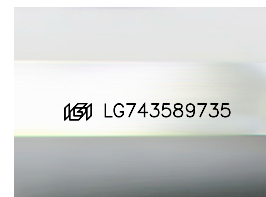


CLARITY CHARACTERISTICS



KEY TO SYMBOLS

Red symbols indicate internal characteristics.
Green symbols indicate external characteristics.



Sample Image Used

COLOR

D E F G H I J Faint Very Light Light

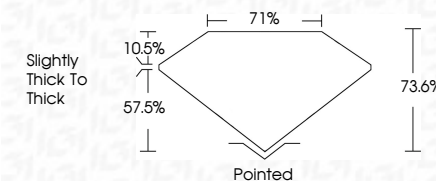
CLARITY

FL	IF	VVS ¹⁻²	VS ¹⁻²	SI ¹⁻²	I ¹⁻³
Flawless	Internally Flawless	Very Very Slightly Included	Very Slightly Included	Slightly Included	Included

LABORATORY GROWN DIAMOND REPORT



November 7, 2025	
IGI Report Number	LG743589735
Description	LABORATORY GROWN DIAMOND
Shape and Cutting Style	PRINCESS CUT
Measurements	5.37 X 5.34 X 3.93 MM
GRADING RESULTS	
Carat Weight	1.00 CARAT
Color Grade	D
Clarity Grade	VVS 1



ADDITIONAL GRADING INFORMATION

Polish	EXCELLENT
Symmetry	EXCELLENT
Fluorescence	NONE
Inscription(s)	161 LG743589735
Comments: As Grown - No indication of post-growth treatment.	
This Laboratory Grown Diamond was created by High Pressure High Temperature (HPHT) growth process.	
Type II	



© IGI 2020, International Gemological Institute

FD - 10 20



THIS DOCUMENT WAS PRODUCED WITH THE FOLLOWING SECURITY MEASURES: SPECIAL DOCUMENT PAPER, INK SCREENS, WATERMARK, BACKGROUND DESIGNS, HOLOGRAM AND OTHER SECURITY FEATURES NOT LISTED AND DO EXCEED DOCUMENT SECURITY INDUSTRY GUIDELINES

www.igi.org

	November 7, 2026
	GJ Report No LGZ4S89735
PRECISE CUT	
APR 37 X 5.34 X 3.93 MM	
Carat Weight	1.00 CARAT
Color Grade	D
Clarity Grade	VVS1
Depth	73.6%
Gable	71%
Taper	Slightly Thick to Thick
Culet	Pointed
Polish	EXCELLENT
Symmetry	EXCELLENT
Fluorescence	NONE
Inscriptions(s)	#69 LGZ4S89735

Comments:

- Excellent - No indication of post-growth treatment.
- This Laboratory Grown Diamond was created by High Pressure High Temperature (HPHT) growth process.
- Type IIa