



**ELECTRONIC COPY**

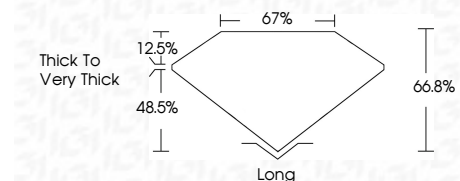
LG743582772  
Report verification at igi.org



November 25, 2025  
IGI Report Number **LG743582772**  
Description **LABORATORY GROWN DIAMOND**  
Shape and Cutting Style **MODIFIED EMERALD CUT**  
Measurements **7.79 X 5.48 X 3.66 MM**

**GRADING RESULTS**

Carat Weight **1.55 CARAT**  
Color Grade **D**  
Clarity Grade **VVS 2**



**ADDITIONAL GRADING INFORMATION**

Polish **EXCELLENT**  
Symmetry **EXCELLENT**  
Fluorescence **NONE**  
Inscription(s) **IGI LG743582772  
100 FACETS**

Comments: This Laboratory Grown Diamond was created by Chemical Vapor Deposition (CVD) growth process. Type IIa



November 25, 2025  
IGI Report No LG743582772  
**MODIFIED EMERALD CUT**  
7.79 X 5.48 X 3.66 MM  
1.55 CARAT  
D  
VVS 2  
66.8%  
67%  
Thick to Very Thick  
Long  
EXCELLENT  
EXCELLENT  
NONE  
IGI LG743582772 100 FACETS  
Comments: This Laboratory Grown Diamond was created by Chemical Vapor Deposition (CVD) growth process. Type IIa

**LABORATORY GROWN DIAMOND REPORT**

November 25, 2025  
IGI Report Number **LG743582772**  
Description **LABORATORY GROWN DIAMOND**  
Shape and Cutting Style **MODIFIED EMERALD CUT**  
Measurements **7.79 X 5.48 X 3.66 MM**

**GRADING RESULTS**

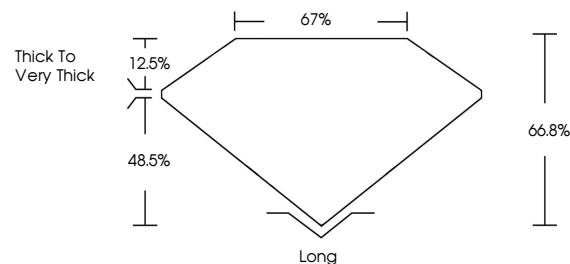
Carat Weight **1.55 CARAT**  
Color Grade **D**  
Clarity Grade **VVS 2**

**ADDITIONAL GRADING INFORMATION**

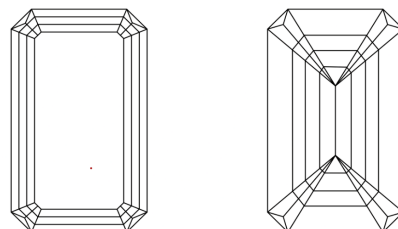
Polish **EXCELLENT**  
Symmetry **EXCELLENT**  
Fluorescence **NONE**  
Inscription(s) **IGI LG743582772  
100 FACETS**

Comments: This Laboratory Grown Diamond was created by Chemical Vapor Deposition (CVD) growth process. Type IIa

**PROPORTIONS**

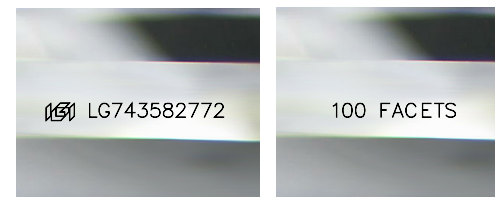


**CLARITY CHARACTERISTICS**



**KEY TO SYMBOLS**

Red symbols indicate internal characteristics.  
Green symbols indicate external characteristics.



Sample Images Used

**COLOR**

D E F G H I J Faint Very Light Light

**CLARITY**

FL	IF	VVS <sup>1-2</sup>	VS <sup>1-2</sup>	SI <sup>1-2</sup>	I <sup>1-3</sup>
Flawless	Internally Flawless	Very Very Slightly Included	Very Slightly Included	Slightly Included	Included