



ELECTRONIC COPY

LABORATORY GROWN DIAMOND REPORT

November 24, 2025	
IGI Report Number	LG743582762
Description	LABORATORY GROWN DIAMOND
Shape and Cutting Style	MODIFIED EMERALD CUT
Measurements	9.84 X 6.83 X 4.61 MM

GRADING RESULTS

Carat Weight	3.09 CARATS
Color Grade	D
Clarity Grade	VS 2

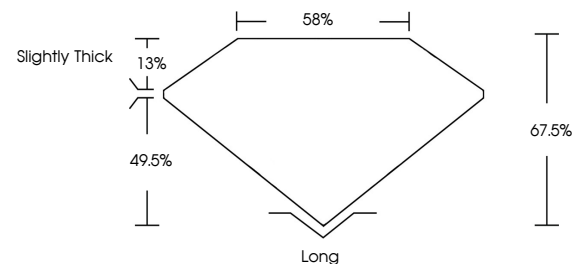
ADDITIONAL GRADING INFORMATION

Polish	EXCELLENT
Symmetry	EXCELLENT
Fluorescence	NONE
Inscription(s)	 LG743582762 100 FACETS

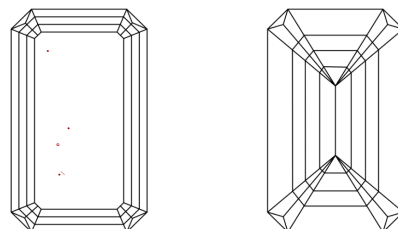
Comments: This Laboratory Grown Diamond was created by Chemical Vapor Deposition (CVD) growth process.
Type IIa

LG743582762
Report verification at lgi.org

PROPORTIONS

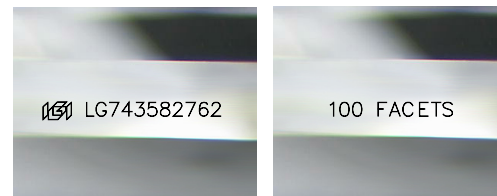


CLARITY CHARACTERISTICS



KEY TO SYMBOLS

Red symbols indicate internal characteristics.
Green symbols indicate external characteristics.



Sample Images Used

COLOR

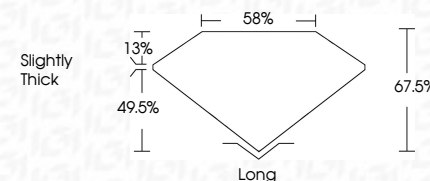
D E F G H I J Faint Very Light Light

CLARITY

FL	IF	VVS ¹⁻²	VS ¹⁻²	SI ¹⁻²	I ¹⁻³
Flawless	Internally Flawless	Very Very Slightly Included	Very Slightly Included	Slightly Included	Included



November 24, 2025	
IGI Report Number	LG743582762
Description	LABORATORY GROWN DIAMOND
Shape and Cutting Style	MODIFIED EMERALD CUT
Measurements	9.84 X 6.83 X 4.61 MM
GRADING RESULTS	
Carat Weight	3.09 CARATS
Color Grade	D
Clarity Grade	VS 2



ADDITIONAL GRADING INFORMATION

Polish	EXCELLENT
Symmetry	EXCELLENT
Fluorescence	NONE
Inscription(s)	LG LG743582762 100 FACETS

Comments: This Laboratory Grown Diamond was created by Chemical Vapor Deposition (CVD) growth process.
Type IIa



© IGI 2020, International Gemological Institute

FD - 10 20

www.igi.org



THIS DOCUMENT WAS PRODUCED WITH THE FOLLOWING SECURITY MEASURES: SPECIAL DOCUMENT PAPER, INK SCREENS, WATERMARK, BACKGROUND DESIGNS, HOLOGRAM AND OTHER SECURITY FEATURES NOT LISTED AND DO EXCEED DOCUMENT SECURITY INDUSTRY GUIDELINE

November 24, 2025
 CGI Report No LG743582762
 MODIFIED EMERALD CIT

6.84 X 6.93 X .61 MM	3.09 CARATS
Carat Weight	D
Color Grade	VS 2
Cutty Grade	67.5%
Depth	58%
Table	Slightly Thick
Girdle	Long
Culet	EXCELLENT
Polish	EXCELLENT
Symmetry	NONE
Fluorescence	
Inscriptions(s)	1991 LG743582702 100

Comments:
This Laboratory Grown Diamond was created by Chemical Vapor Deposition (CVD) growth process.