



ELECTRONIC COPY

LG743580222
Report verification at igi.org



November 10, 2025
IGI Report Number **LG743580222**
Description **LABORATORY GROWN DIAMOND**
Shape and Cutting Style **CUSHION MODIFIED BRILLIANT**
Measurements **9.15 X 7.72 X 4.90 MM**
GRADING RESULTS
Carat Weight **3.01 CARATS**
Color Grade **FANCY DEEP GREEN**
Clarity Grade **SI 1**

LABORATORY GROWN DIAMOND REPORT

November 10, 2025
IGI Report Number **LG743580222**
Description **LABORATORY GROWN DIAMOND**
Shape and Cutting Style **CUSHION MODIFIED BRILLIANT**
Measurements **9.15 X 7.72 X 4.90 MM**

GRADING RESULTS

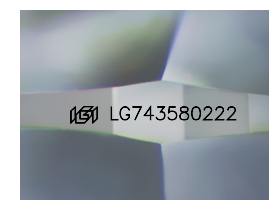
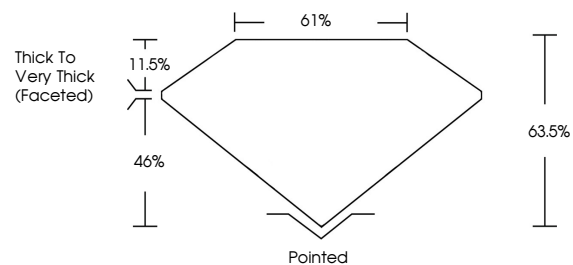
Carat Weight **3.01 CARATS**
Color Grade **FANCY DEEP GREEN**
Clarity Grade **SI 1**

ADDITIONAL GRADING INFORMATION

Polish **EXCELLENT**
Symmetry **EXCELLENT**
Fluorescence **SLIGHT**
Inscription(s) **LG743580222**

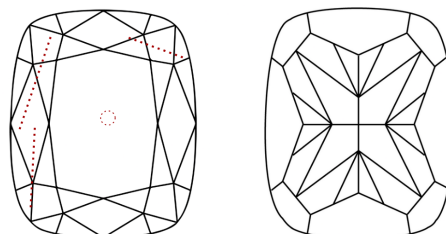
Comments: This Laboratory Grown Diamond was created by Chemical Vapor Deposition (CVD) growth process.
Indications of post-growth treatment.

PROPORTIONS



Sample Image Used

CLARITY CHARACTERISTICS



KEY TO SYMBOLS

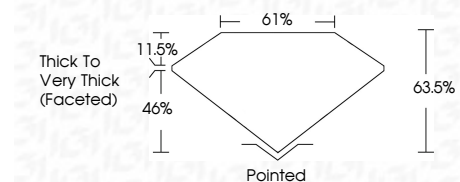
Red symbols indicate internal characteristics.
Green symbols indicate external characteristics.

COLOR

D E F G H I J Faint Very Light Light

CLARITY

FL	IF	VS ¹⁻²	VS ¹⁻²	SI ¹⁻²	I ¹⁻³
Flawless	Internally Flawless	Very Very Slightly Included	Very Slightly Included	Slightly Included	Included



ADDITIONAL GRADING INFORMATION

Polish **EXCELLENT**
Symmetry **EXCELLENT**
Fluorescence **SLIGHT**
Inscription(s) **LG743580222**
Comments: This Laboratory Grown Diamond was created by Chemical Vapor Deposition (CVD) growth process.
Indications of post-growth treatment.



November 10, 2025
IGI Report No **LG743580222**
CUSHION MODIFIED BRILLIANT
3.01 CARATS
FANCY DEEP GREEN
SI 1
9.15 X 7.72 X 4.90 MM
3.01 CARATS
FANCY DEEP GREEN
SI 1
63.5%
61%
Thick to Very Thick (Faceted)
Pointed
EXCELLENT
EXCELLENT
SLIGHT
SLIGHT
IGI LG743580222

Comments: This Laboratory Grown Diamond was created by Chemical Vapor Deposition (CVD) growth process.
Indications of post-growth treatment.