



ELECTRONIC COPY

LG743577966
Report verification at igi.org



November 17, 2025

IGI Report Number LG743577966

Description LABORATORY GROWN DIAMOND

Shape and Cutting Style ROUND BRILLIANT

Measurements 7.52 - 7.55 X 4.57 MM

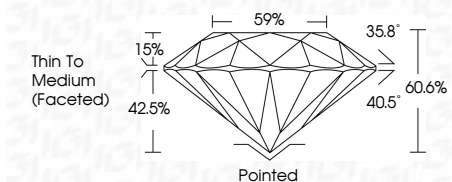
GRADING RESULTS

Carat Weight 1.60 CARAT

Color Grade D

Clarity Grade VVS 2

Cut Grade IDEAL



ADDITIONAL GRADING INFORMATION

Polish EXCELLENT

Symmetry EXCELLENT

Fluorescence NONE

Inscription(s) IGI LG743577966

Comments: This Laboratory Grown Diamond was created by Chemical Vapor Deposition (CVD) growth process. Type IIa



Summary table with columns: November 17, 2025, IGI Report No LG743577966, ROUND BRILLIANT, 1.60 CARAT, D, VVS 2, IDEAL, 60.6%, 59%, Thin To Medium (Faceted), Pointed, EXCELLENT, EXCELLENT, NONE, IGI LG743577966

Comments: This Laboratory Grown Diamond was created by Chemical Vapor Deposition (CVD) growth process. Type IIa

November 17, 2025
IGI Report Number LG743577966
Description LABORATORY GROWN DIAMOND
Shape and Cutting Style ROUND BRILLIANT
Measurements 7.52 - 7.55 X 4.57 MM

GRADING RESULTS

Carat Weight 1.60 CARAT

Color Grade D

Clarity Grade VVS 2

Cut Grade IDEAL

ADDITIONAL GRADING INFORMATION

Polish EXCELLENT

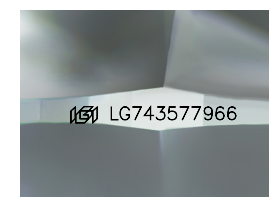
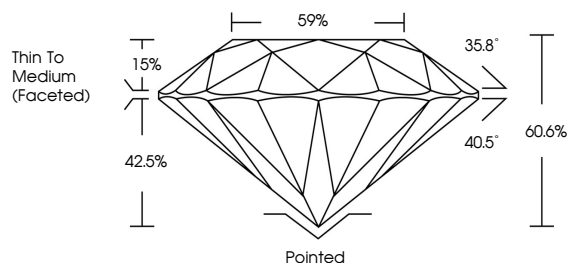
Symmetry EXCELLENT

Fluorescence NONE

Inscription(s) IGI LG743577966

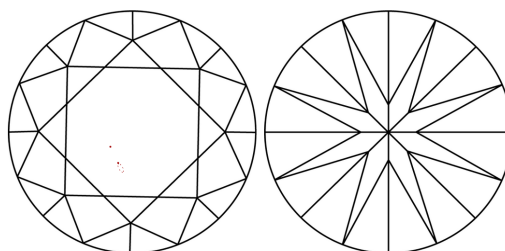
Comments: This Laboratory Grown Diamond was created by Chemical Vapor Deposition (CVD) growth process. Type IIa

PROPORTIONS



Sample Image Used

CLARITY CHARACTERISTICS



KEY TO SYMBOLS

Red symbols indicate internal characteristics.
Green symbols indicate external characteristics.

COLOR

D E F G H I J Faint Very Light Light

CLARITY

Table with columns: FL, IF, VVS 1-2, VS 1-2, SI 1-2, I 1-3 and rows: Flawless, Internally Flawless, Very Very Slightly Included, Very Slightly Included, Slightly Included, Included

