



**ELECTRONIC COPY**

LG743576341  
Report verification at igi.org



November 12, 2025

IGI Report Number **LG743576341**

Description **LABORATORY GROWN DIAMOND**

Shape and Cutting Style **ROUND BRILLIANT**

Measurements **7.92 - 7.97 X 5.08 MM**

**GRADING RESULTS**

Carat Weight **2.01 CARATS**

Color Grade **D**

Clarity Grade **VS 1**

Cut Grade **VERY GOOD**

November 12, 2025  
IGI Report Number **LG743576341**  
Description **LABORATORY GROWN DIAMOND**  
Shape and Cutting Style **ROUND BRILLIANT**  
Measurements **7.92 - 7.97 X 5.08 MM**

**GRADING RESULTS**

Carat Weight **2.01 CARATS**

Color Grade **D**

Clarity Grade **VS 1**

Cut Grade **VERY GOOD**

**ADDITIONAL GRADING INFORMATION**

Polish **EXCELLENT**

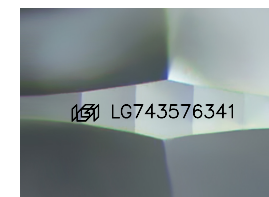
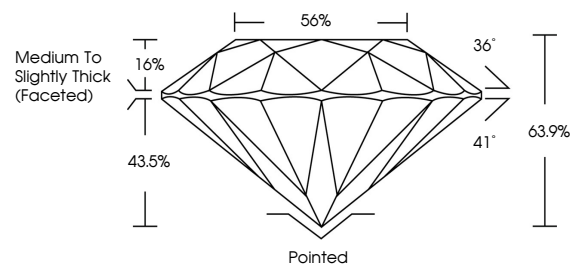
Symmetry **EXCELLENT**

Fluorescence **NONE**

Inscription(s) **LG743576341**

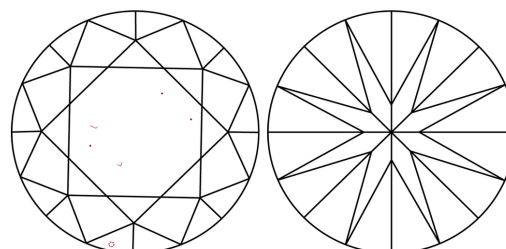
Comments: This Laboratory Grown Diamond was created by Chemical Vapor Deposition (CVD) growth process.  
Type IIa

**PROPORTIONS**



Sample Image Used

**CLARITY CHARACTERISTICS**



**KEY TO SYMBOLS**

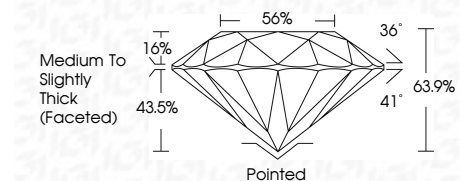
Red symbols indicate internal characteristics.  
Green symbols indicate external characteristics.

**COLOR**

D E F G H I J Faint Very Light Light

**CLARITY**

| FL       | IF                  | VS <sup>1-2</sup>           | VS <sup>1-2</sup>      | SI <sup>1-2</sup> | I <sup>1-3</sup> |
|----------|---------------------|-----------------------------|------------------------|-------------------|------------------|
| Flawless | Internally Flawless | Very Very Slightly Included | Very Slightly Included | Slightly Included | Included         |



**ADDITIONAL GRADING INFORMATION**

Polish **EXCELLENT**

Symmetry **EXCELLENT**

Fluorescence **NONE**

Inscription(s) **LG743576341**

Comments: This Laboratory Grown Diamond was created by Chemical Vapor Deposition (CVD) growth process.  
Type IIa



**IGI**



|                   |                           |                        |                    |          |             |                  |              |            |   |                |  |                  |             |                    |
|-------------------|---------------------------|------------------------|--------------------|----------|-------------|------------------|--------------|------------|---|----------------|--|------------------|-------------|--------------------|
| November 12, 2025 | IGI Report No LG743576341 | <b>ROUND BRILLIANT</b> | <b>2.01 CARATS</b> | <b>D</b> | <b>VS 1</b> | <b>VERY GOOD</b> | <b>63.9%</b> | <b>56%</b> | <b>Medium To Slightly Thick (Faceted)</b> | <b>Pointed</b> | <b>EXCELLENT</b>   | <b>EXCELLENT</b> | <b>NONE</b> | <b>LG743576341</b> |
| Carat Weight      | Color Grade               | Clarity Grade          | Depth              | Table    | Grade       | Culet            | Polish       | Symmetry   | Fluorescence                              | Inscription(s) | Comments: This Laboratory Grown Diamond was created by Chemical Vapor Deposition (CVD) growth process.<br>Type IIa |                  |             |                    |