



**ELECTRONIC COPY**

LG743576034  
Report verification at igi.org



November 17, 2025

IGI Report Number **LG743576034**

Description **LABORATORY GROWN DIAMOND**

Shape and Cutting Style **ROUND BRILLIANT**

Measurements **8.08 - 8.15 X 4.97 MM**

**GRADING RESULTS**

Carat Weight **2.02 CARATS**

Color Grade **E**

Clarity Grade **VS 1**

Cut Grade **EXCELLENT**

November 17, 2025  
IGI Report Number **LG743576034**  
Description **LABORATORY GROWN DIAMOND**  
Shape and Cutting Style **ROUND BRILLIANT**  
Measurements **8.08 - 8.15 X 4.97 MM**

**GRADING RESULTS**

Carat Weight **2.02 CARATS**

Color Grade **E**

Clarity Grade **VS 1**

Cut Grade **EXCELLENT**

**ADDITIONAL GRADING INFORMATION**

Polish **EXCELLENT**

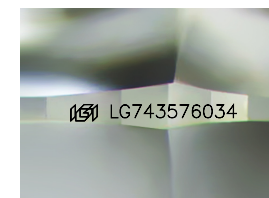
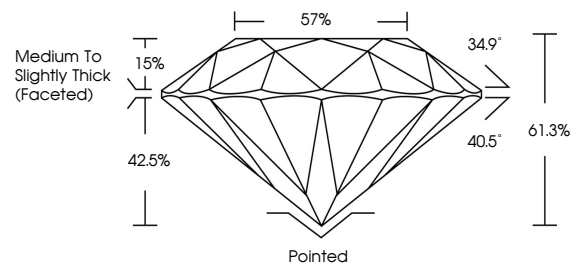
Symmetry **EXCELLENT**

Fluorescence **NONE**

Inscription(s) **LG743576034**

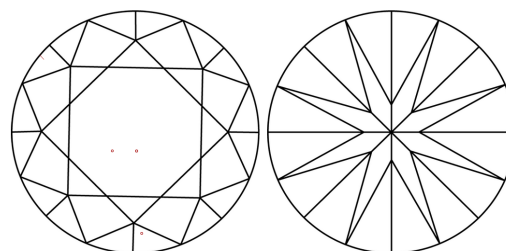
Comments: This Laboratory Grown Diamond was created by Chemical Vapor Deposition (CVD) growth process.  
Type IIa

**PROPORTIONS**



Sample Image Used

**CLARITY CHARACTERISTICS**



**KEY TO SYMBOLS**

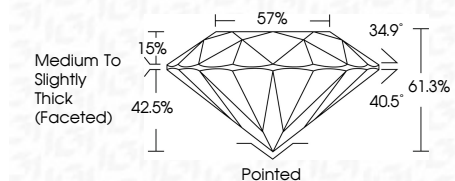
Red symbols indicate internal characteristics.  
Green symbols indicate external characteristics.

**COLOR**

D E F G H I J Faint Very Light Light

**CLARITY**

FL	IF	VS <sup>1-2</sup>	VS <sup>1-2</sup>	SI <sup>1-2</sup>	I <sup>1-3</sup>
Flawless	Internally Flawless	Very Very Slightly Included	Very Slightly Included	Slightly Included	Included



**ADDITIONAL GRADING INFORMATION**

Polish **EXCELLENT**

Symmetry **EXCELLENT**

Fluorescence **NONE**

Inscription(s) **LG743576034**

Comments: This Laboratory Grown Diamond was created by Chemical Vapor Deposition (CVD) growth process.  
Type IIa



**IGI**



November 17, 2025  
IGI Report No **LG743576034**  
**ROUND BRILLIANT**  
8.08 - 8.15 X 4.97 MM  
2.02 CARATS  
E  
Color Grade  
VS 1  
Clarity Grade  
EXCELLENT  
61.3%  
Depth  
57%  
Table  
Medium To Slightly Thick (Faceted)  
Culet  
Pointed  
Polish  
EXCELLENT  
Symmetry  
EXCELLENT  
Fluorescence  
NONE  
Inscription(s)  
IGI LG743576034  
Comments: This Laboratory Grown Diamond was created by Chemical Vapor Deposition (CVD) growth process.  
Type IIa