



**ELECTRONIC COPY**

LG743575701  
Report verification at igi.org



November 8, 2025

IGI Report Number **LG743575701**

Description **LABORATORY GROWN DIAMOND**

Shape and Cutting Style **ROUND BRILLIANT**

Measurements **10.68 - 10.71 X 6.51 MM**

**GRADING RESULTS**

Carat Weight **4.60 CARATS**

Color Grade **E**

Clarity Grade **VVS 2**

Cut Grade **IDEAL**

November 8, 2025  
IGI Report Number **LG743575701**  
Description **LABORATORY GROWN DIAMOND**  
Shape and Cutting Style **ROUND BRILLIANT**  
Measurements **10.68 - 10.71 X 6.51 MM**

**GRADING RESULTS**

Carat Weight **4.60 CARATS**

Color Grade **E**

Clarity Grade **VVS 2**

Cut Grade **IDEAL**

**ADDITIONAL GRADING INFORMATION**

Polish **EXCELLENT**

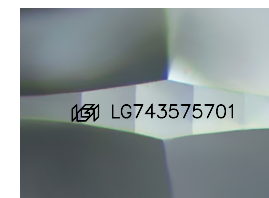
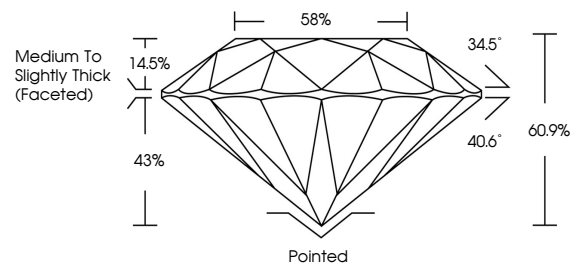
Symmetry **EXCELLENT**

Fluorescence **NONE**

Inscription(s) **IGI LG743575701**

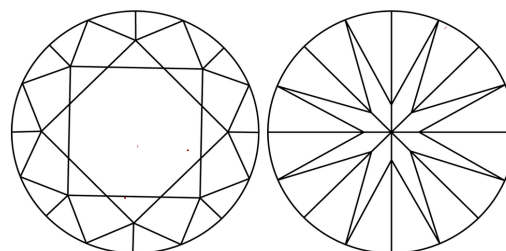
Comments: This Laboratory Grown Diamond was created by Chemical Vapor Deposition (CVD) growth process. Type IIa

**PROPORTIONS**



Sample Image Used

**CLARITY CHARACTERISTICS**



**KEY TO SYMBOLS**

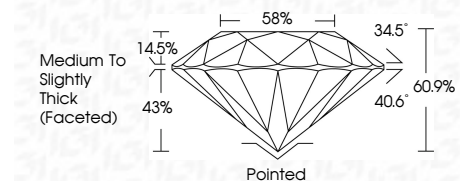
Red symbols indicate internal characteristics.  
Green symbols indicate external characteristics.

**COLOR**

D E F G H I J Faint Very Light Light

**CLARITY**

FL	IF	VVS <sup>1-2</sup>	VS <sup>1-2</sup>	SI <sup>1-2</sup>	I <sup>1-3</sup>
Flawless	Internally Flawless	Very Very Slightly Included	Very Slightly Included	Slightly Included	Included



**ADDITIONAL GRADING INFORMATION**

Polish **EXCELLENT**

Symmetry **EXCELLENT**

Fluorescence **NONE**

Inscription(s) **IGI LG743575701**

Comments: This Laboratory Grown Diamond was created by Chemical Vapor Deposition (CVD) growth process. Type IIa



**IGI**



November 8, 2025  
IGI Report No LG743575701  
**ROUND BRILLIANT**

**4.60 CARATS**  
E

**VVS 2**  
IDEAL

**60.9%**  
58%  
Medium To Slightly Thick (Faceted)

**Pointed**  
EXCELLENT  
EXCELLENT  
NONE  
NONE

IGI LG743575701

Comments: This Laboratory Grown Diamond was created by Chemical Vapor Deposition (CVD) growth process. Type IIa