



ELECTRONIC COPY

LG743575641
Report verification at igi.org



November 8, 2025

IGI Report Number **LG743575641**

Description **LABORATORY GROWN DIAMOND**

Shape and Cutting Style **ROUND BRILLIANT**

Measurements **8.01 - 8.09 X 4.82 MM**

GRADING RESULTS

Carat Weight **1.90 CARAT**

Color Grade **E**

Clarity Grade **VVS 1**

Cut Grade **IDEAL**

November 8, 2025
IGI Report Number **LG743575641**
Description **LABORATORY GROWN DIAMOND**
Shape and Cutting Style **ROUND BRILLIANT**
Measurements **8.01 - 8.09 X 4.82 MM**

GRADING RESULTS

Carat Weight **1.90 CARAT**

Color Grade **E**

Clarity Grade **VVS 1**

Cut Grade **IDEAL**

ADDITIONAL GRADING INFORMATION

Polish **EXCELLENT**

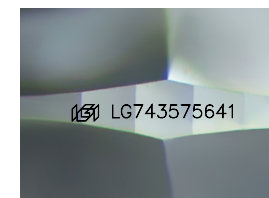
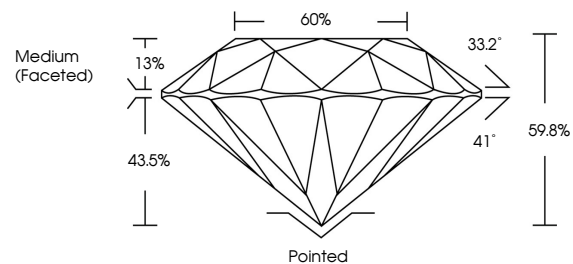
Symmetry **EXCELLENT**

Fluorescence **NONE**

Inscription(s) **LG743575641**

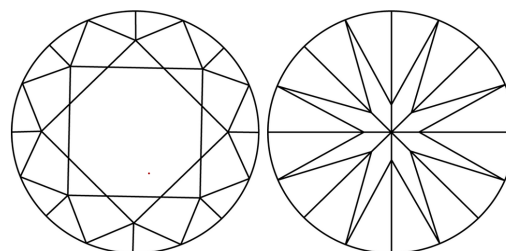
Comments: This Laboratory Grown Diamond was created by Chemical Vapor Deposition (CVD) growth process.
Type IIa

PROPORTIONS



Sample Image Used

CLARITY CHARACTERISTICS



KEY TO SYMBOLS

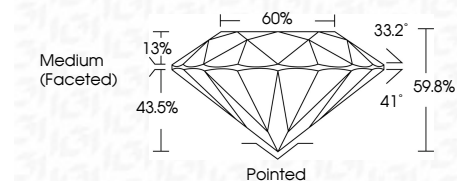
Red symbols indicate internal characteristics.
Green symbols indicate external characteristics.

COLOR

D E F G H I J Faint Very Light Light

CLARITY

FL	IF	VVS ¹⁻²	VS ¹⁻²	SI ¹⁻²	I ¹⁻³
Flawless	Internally Flawless	Very Very Slightly Included	Very Slightly Included	Slightly Included	Included



ADDITIONAL GRADING INFORMATION

Polish **EXCELLENT**

Symmetry **EXCELLENT**

Fluorescence **NONE**

Inscription(s) **LG743575641**

Comments: This Laboratory Grown Diamond was created by Chemical Vapor Deposition (CVD) growth process.
Type IIa



IGI



November 8, 2025	IGI Report No LG743575641	ROUND BRILLIANT	8.01 - 8.09 X 4.82 MM	1.90 CARAT	E	VVS 1	IDEAL	59.8%	60%	Medium (Faceted)	Pointed	EXCELLENT	EXCELLENT	NONE	LG743575641
Cutter	Polish	Symmetry	Fluorescence	Inscription(s)											

Comments: This Laboratory Grown Diamond was created by Chemical Vapor Deposition (CVD) growth process.
Type IIa