

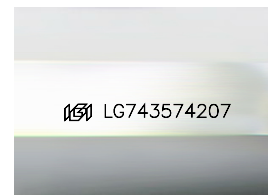
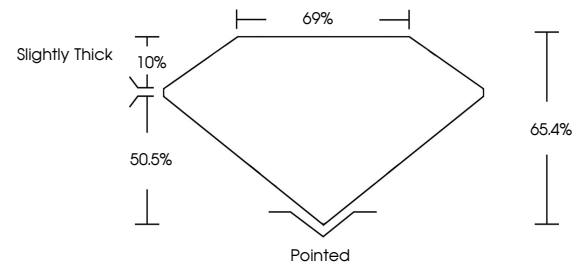


**ELECTRONIC COPY**

## LABORATORY GROWN DIAMOND REPORT

LG743574207  
Report verification at [igi.org](https://igi.org)

## PROPORTIONS



Sample Image Used

**COLOR**

D E F G H I J Faint Very Light Light

## CLARITY

| FL       | IF                  | VVS <sup>1-2</sup>          | VS <sup>1-2</sup>      | SI <sup>1-2</sup> | I <sup>1-3</sup> |
|----------|---------------------|-----------------------------|------------------------|-------------------|------------------|
| Flawless | Internally Flawless | Very Very Slightly Included | Very Slightly Included | Slightly Included | Included         |

## LABORATORY GROWN DIAMOND REPORT



November 10, 2025

IGI Report Number **LG743574207**Description **LABORATORY GROWN DIAMOND**

Shape and Cutting Style

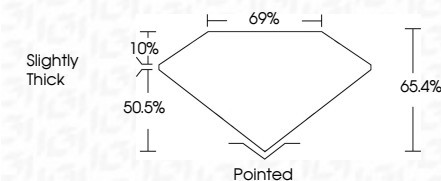
Measurements **8.41 X 5.72 X 3.74 MM**

## GRADING RESULTS

Carat Weight 1.50 CARAT

Color Grade D

Clarity Grade VS 1



### ADDITIONAL GRADING INFORMATION

Polish **EXCELLENT**Symmetry **EXCELLENT**Fluorescence **NONE**Inscription(s)  LG743574207

Comments: This Laboratory Grown Diamond was created by Chemical Vapor Deposition (CVD) growth process.  
Type IIa



© IGI 2020, International Gemological Institute

FD - 10 20

**www.igi.org**



THIS DOCUMENT WAS PRODUCED WITH THE FOLLOWING SECURITY MEASURES: SPECIAL DOCUMENT PAPER, INK SCREENS, WATERMARK, BACKGROUND DESIGNS, HOLOGRAM AND OTHER SECURITY FEATURES NOT LISTED AND DO EXCEED DOCUMENT SECURITY INDUSTRY GUIDELINES

November 10, 2025

November 10, 2025  
GI Report No LG743574207  
CUT CORNERED RECT. MODIFIED BRILLIANT

3.41 X 5.72 X 3.74 MM  
Carat Weight 1.50 CARAT

|               | D | VS 1 |
|---------------|---|------|
| Color Grade   |   |      |
| Clarity Grade |   |      |

| Depth  | 65.4%          |
|--------|----------------|
| Totale | 69%            |
| Girdle | Slightly Thick |

| Culet | Pointed |
|-------|---------|
|       |         |

|           | Polish | Symmetry | Fluorescence |
|-----------|--------|----------|--------------|
| EXCELLENT |        |          |              |
| EXCELLENT |        |          |              |
| NONE      |        |          |              |

| Inscription(s) | 1991 LG743574207 |
|----------------|------------------|
|                |                  |

**Comments:**  
This Laboratory Grown Diamond was  
created by Chemical Vapor Deposition  
(CVD) growth process.

Type IIa