



ELECTRONIC COPY

LG743572934
Report verification at igi.org



November 8, 2025
IGI Report Number **LG743572934**
Description **LABORATORY GROWN DIAMOND**
Shape and Cutting Style **MODIFIED PENTAGONAL MIXED CUT**
Measurements **9.60 X 10.30 X 1.90 MM**
GRADING RESULTS
Carat Weight **1.30 CARAT**
Color Grade **FANCY VIVID BLUE**
Clarity Grade **SI 1**

LABORATORY GROWN DIAMOND REPORT

November 8, 2025
IGI Report Number **LG743572934**
Description **LABORATORY GROWN DIAMOND**
Shape and Cutting Style **MODIFIED PENTAGONAL MIXED CUT**
Measurements **9.60 X 10.30 X 1.90 MM**

GRADING RESULTS

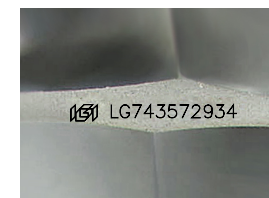
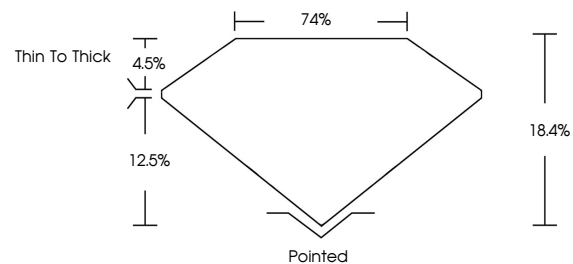
Carat Weight **1.30 CARAT**
Color Grade **FANCY VIVID BLUE**
Clarity Grade **SI 1**

ADDITIONAL GRADING INFORMATION

Polish **VERY GOOD**
Symmetry **EXCELLENT**
Fluorescence **NONE**
Inscription(s) **IGI LG743572934**

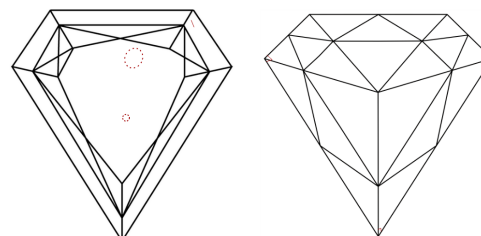
Comments: This Laboratory Grown Diamond was created by Chemical Vapor Deposition (CVD) growth process.
Indications of post-growth treatment.

PROPORTIONS



Sample Image Used

CLARITY CHARACTERISTICS



KEY TO SYMBOLS

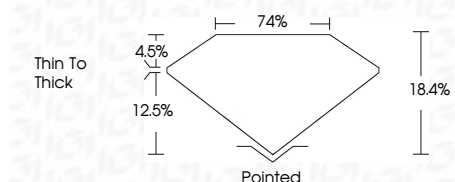
Red symbols indicate internal characteristics.
Green symbols indicate external characteristics.

COLOR

D E F G H I J Faint Very Light Light

CLARITY

FL	IF	VS ¹⁻²	VS ¹⁻²	SI ¹⁻²	I ¹⁻³
Flawless	Internally Flawless	Very Very Slightly Included	Very Slightly Included	Slightly Included	Included



ADDITIONAL GRADING INFORMATION

Polish **VERY GOOD**
Symmetry **EXCELLENT**
Fluorescence **NONE**
Inscription(s) **IGI LG743572934**
Comments: This Laboratory Grown Diamond was created by Chemical Vapor Deposition (CVD) growth process.
Indications of post-growth treatment.



IGI



November 8, 2025
IGI Report No **LG743572934**
MODIFIED PENTAGONAL MIXED CUT
9.60 X 10.30 X 1.90 MM
1.30 CARAT
FANCY VIVID BLUE
SI 1
18.4%
74%
Thin To Thick
Pointed
Polish **VERY GOOD**
Symmetry **EXCELLENT**
Fluorescence **NONE**
Inscription(s) **IGI LG743572934**
Comments: This Laboratory Grown Diamond was created by Chemical Vapor Deposition (CVD) growth process.
Indications of post-growth treatment.