



ELECTRONIC COPY

LG743572916 Report verification at igi.org



November 6, 2025

IGI Report Number LG743572916

Description LABORATORY GROWN DIAMOND

Shape and Cutting Style OLD EUROPEAN CUT

Measurements 7.28 - 7.30 X 4.56 MM

GRADING RESULTS

Carat Weight 1.61 CARAT

Color Grade FANCY VIVID BLUE

Clarity Grade VVS 2

November 6, 2025
IGI Report Number LG743572916
Description LABORATORY GROWN DIAMOND
Shape and Cutting Style OLD EUROPEAN CUT
Measurements 7.28 - 7.30 X 4.56 MM

GRADING RESULTS

Carat Weight 1.61 CARAT

Color Grade FANCY VIVID BLUE

Clarity Grade VVS 2

ADDITIONAL GRADING INFORMATION

Polish EXCELLENT

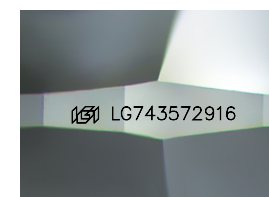
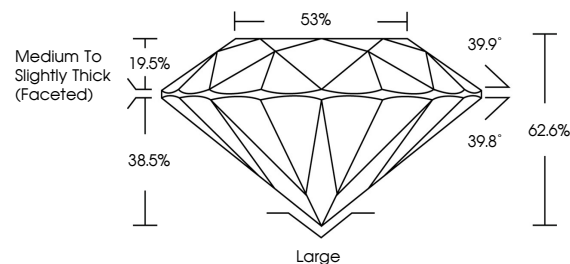
Symmetry EXCELLENT

Fluorescence NONE

Inscription(s) IGI LG743572916

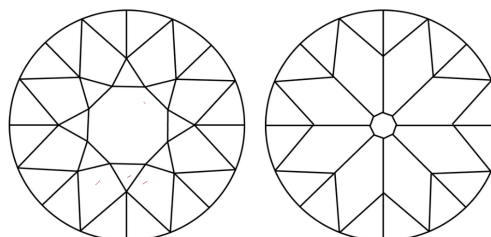
Comments: This Laboratory Grown Diamond was created by Chemical Vapor Deposition (CVD) growth process. Indications of post-growth treatment.

PROPORTIONS



Sample Image Used

CLARITY CHARACTERISTICS



KEY TO SYMBOLS

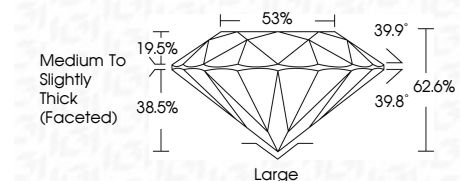
Red symbols indicate internal characteristics. Green symbols indicate external characteristics.

COLOR

D E F G H I J Faint Very Light Light

CLARITY

Table with columns for FL, IF, VVS 1-2, VS 1-2, SI 1-2, I 1-3 and corresponding descriptions: Flawless, Internally Flawless, Very Very Slightly Included, Very Slightly Included, Slightly Included, Included.



ADDITIONAL GRADING INFORMATION

Polish EXCELLENT

Symmetry EXCELLENT

Fluorescence NONE

Inscription(s) IGI LG743572916

Comments: This Laboratory Grown Diamond was created by Chemical Vapor Deposition (CVD) growth process. Indications of post-growth treatment.



Summary of report details including date, report number, description, shape, measurements, grading results (carat, color, clarity), and additional information (polish, symmetry, fluorescence, inscription).

Comments: This Laboratory Grown Diamond was created by Chemical Vapor Deposition (CVD) growth process. Indications of post-growth treatment.