



ELECTRONIC COPY

LG743572695
Report verification at igi.org



November 6, 2025

IGI Report Number **LG743572695**

Description **LABORATORY GROWN DIAMOND**

Shape and Cutting Style **ROUND BRILLIANT**

Measurements **8.27 - 8.33 X 5.15 MM**

GRADING RESULTS

Carat Weight **2.24 CARATS**

Color Grade **D**

Clarity Grade **VS 1**

Cut Grade **EXCELLENT**

November 6, 2025
IGI Report Number **LG743572695**
Description **LABORATORY GROWN DIAMOND**
Shape and Cutting Style **ROUND BRILLIANT**
Measurements **8.27 - 8.33 X 5.15 MM**

GRADING RESULTS

Carat Weight **2.24 CARATS**

Color Grade **D**

Clarity Grade **VS 1**

Cut Grade **EXCELLENT**

ADDITIONAL GRADING INFORMATION

Polish **EXCELLENT**

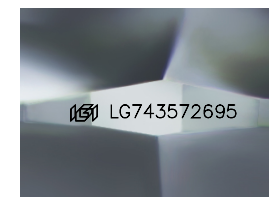
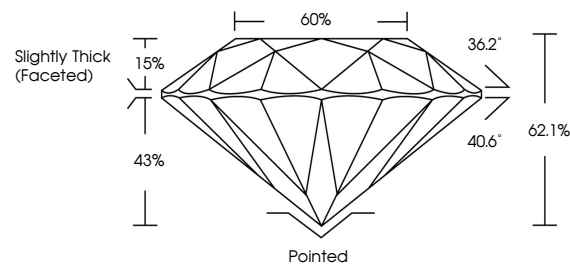
Symmetry **EXCELLENT**

Fluorescence **NONE**

Inscription(s) **IGI LG743572695**

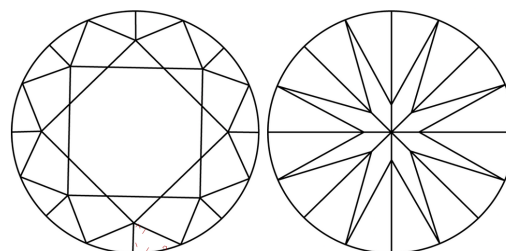
Comments: As Grown - No indication of post-growth treatment.
This Laboratory Grown Diamond was created by High Pressure High Temperature (HPHT) growth process.
Type II

PROPORTIONS



Sample Image Used

CLARITY CHARACTERISTICS



KEY TO SYMBOLS

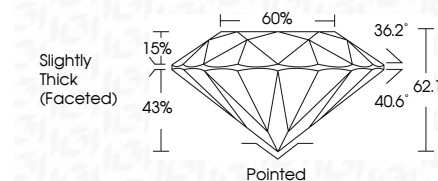
Red symbols indicate internal characteristics.
Green symbols indicate external characteristics.

COLOR

D E F G H I J Faint Very Light Light

CLARITY

FL	IF	VS ¹⁻²	VS ¹⁻²	SI ¹⁻²	I ¹⁻³
Flawless	Internally Flawless	Very Very Slightly Included	Very Slightly Included	Slightly Included	Included



ADDITIONAL GRADING INFORMATION

Polish **EXCELLENT**

Symmetry **EXCELLENT**

Fluorescence **NONE**

Inscription(s) **IGI LG743572695**

Comments: As Grown - No indication of post-growth treatment.
This Laboratory Grown Diamond was created by High Pressure High Temperature (HPHT) growth process.
Type II



IGI



November 6, 2025
IGI Report No LG743572695
ROUND BRILLIANT
8.27 - 8.33 X 5.15 MM
Carat Weight 2.24 CARATS
Color Grade D
Clarity Grade VS 1
Depth 62.1%
Table 60%
Girdle Slightly Thick (Faceted)
Culet Pointed
Polish EXCELLENT
Symmetry EXCELLENT
Fluorescence NONE
Inscriptions(s) IGI LG743572695
Comments: As Grown - No indication of post-growth treatment.
This Laboratory Grown Diamond was created by High Pressure High Temperature (HPHT) growth process.
Type II