



**INTERNATIONAL  
GEMOLOGICAL  
INSTITUTE**

**ELECTRONIC COPY**

## LABORATORY GROWN DIAMOND REPORT

|                         |                            |
|-------------------------|----------------------------|
| October 17, 2025        |                            |
| IGI Report Number       | LG743571820                |
| Description             | LABORATORY GROWN DIAMOND   |
| Shape and Cutting Style | CUSHION MODIFIED BRILLIANT |
| Measurements            | 9.19 X 6.78 X 4.34 MM      |

## GRADING RESULTS

|               |                     |
|---------------|---------------------|
| Carat Weight  | 2.01 CARATS         |
| Color Grade   | D                   |
| Clarity Grade | INTERNALLY FLAWLESS |
| Cut Grade     | EXCELLENT           |

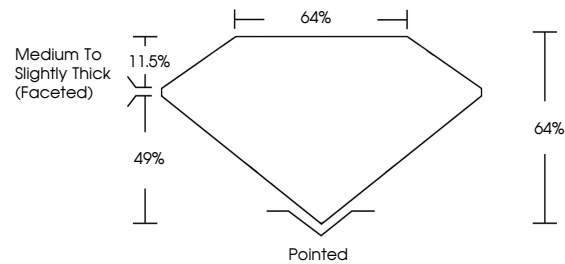
### ADDITIONAL GRADING INFORMATION

|                |   |
|----------------|---|
| Polish         | EXCELLENT   |
| Symmetry       | EXCELLENT   |
| Fluorescence   | NONE  |
| Inscription(s) |  LG743571820 |

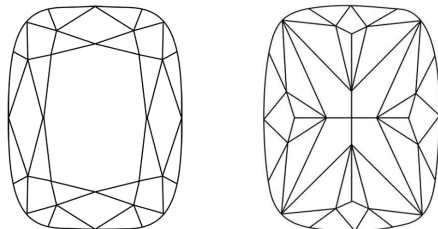
Comments: As Grown - No indication of post-growth treatment.  
This Laboratory Grown Diamond was created by High Pressure High Temperature (HPHT) growth process.  
Type II

LG743571820  
Report verification at [igi.org](https://igi.org)

## PROPORTIONS

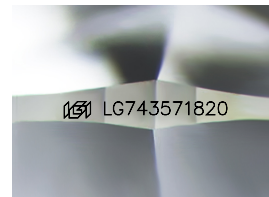


## CLARITY CHARACTERISTICS



## KEY TO SYMBOLS

Red symbols indicate internal characteristics.  
Green symbols indicate external characteristics.



Sample Image Used

**COLOR**

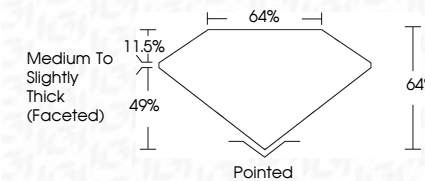
D E F G H I J Faint Very Light Light

## CLARITY

| FL       | IF                  | VVS <sup>1-2</sup>          | VS <sup>1-2</sup>      | SI <sup>1-2</sup> | I <sup>1-3</sup> |
|----------|---------------------|-----------------------------|------------------------|-------------------|------------------|
| Flawless | Internally Flawless | Very Very Slightly Included | Very Slightly Included | Slightly Included | Included         |



|                         |                               |
|-------------------------|-------------------------------|
| October 17, 2025        |                               |
| IGI Report Number       | LG743571820                   |
| Description             | LABORATORY GROWN DIAMOND      |
| Shape and Cutting Style | CUSHION MODIFIED<br>BRILLIANT |
| Measurements            | 9.19 X 6.78 X 4.34 MM         |
| GRADING RESULTS         |                               |
| Carat Weight            | 2.01 CARATS                   |
| Color Grade             | D                             |
| Clarity Grade           | INTERNALLY FLAWLESS           |
| Cut Grade               | EXCELLENT                     |



### ADDITIONAL GRADING INFORMATION

|  |                            |
|--|----------------------------|
| Polish   | EXCELLENT                  |
| Symmetry   | EXCELLENT                  |
| Fluorescence   | NONE                       |
| Inscription(s)   | <del>(G)</del> LG743571820 |
| Comments: As Grown - No indication of post-growth treatment.                                       |                            |
| This Laboratory Grown Diamond was created by High Pressure High Temperature (HPHT) growth process. |                            |
| Type II  |                            |



IG



© IGI 2020, International Gemological Institute

FD - 10 20

**www.igi.org**

THIS DOCUMENT WAS PRODUCED WITH THE FOLLOWING SECURITY MEASURES: SPECIAL DOCUMENT PAPER, INK SCREENS, WATERMARK, BACKGROUND DESIGNS, HOLOGRAM AND OTHER SECURITY FEATURES NOT LISTED AND DO EXCEED DOCUMENT SECURITY INDUSTRY GUIDELINES