



**ELECTRONIC COPY**

LG743571741  
Report verification at igi.org



October 30, 2025

IGI Report Number **LG743571741**

Description **LABORATORY GROWN DIAMOND**

Shape and Cutting Style **CUT CORNERED  
RECTANGULAR MODIFIED  
BRILLIANT**

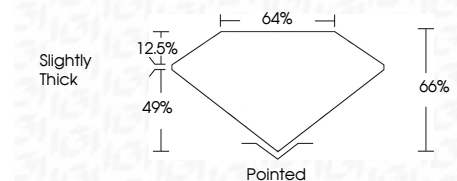
Measurements **7.25 X 5.12 X 3.38 MM**

**GRADING RESULTS**

Carat Weight **1.08 CARAT**

Color Grade **D**

Clarity Grade **VVS 2**



**ADDITIONAL GRADING INFORMATION**

Polish **EXCELLENT**

Symmetry **EXCELLENT**

Fluorescence **NONE**

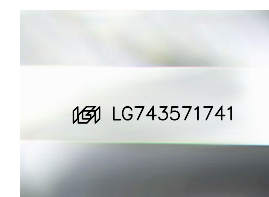
Inscription(s) **IGI LG743571741**

Comments: This Laboratory Grown Diamond was created by Chemical Vapor Deposition (CVD) growth process. Type IIa



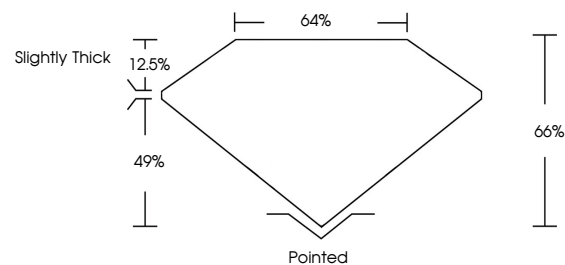
**IGI**

October 30, 2025  
IGI Report No LG743571741  
CUT CORNERED RECT. MODIFIED BRILLIANT  
1.08 CARAT  
D  
7.25 X 5.12 X 3.38 MM  
Color Grade  
VVS 2  
Depth 49%  
Table 12.5%  
Girdle  
Slightly Thick  
Culet  
Pointed  
Polish  
EXCELLENT  
Symmetry  
EXCELLENT  
Fluorescence  
NONE  
Inscription(s)  
IGI LG743571741  
Comments: This Laboratory Grown Diamond was created by Chemical Vapor Deposition (CVD) growth process. Type IIa

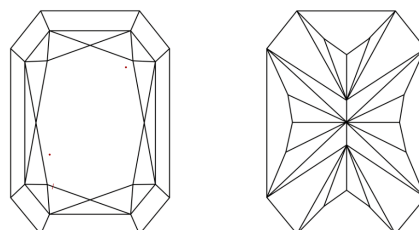


Sample Image Used

**PROPORTIONS**



**CLARITY CHARACTERISTICS**



**KEY TO SYMBOLS**

Red symbols indicate internal characteristics.  
Green symbols indicate external characteristics.

**COLOR**

D E F G H I J Faint Very Light Light

**CLARITY**

FL	IF	VVS <sup>1-2</sup>	VS <sup>1-2</sup>	SI <sup>1-2</sup>	I <sup>1-3</sup>
Flawless	Internally Flawless	Very Very Slightly Included	Very Slightly Included	Slightly Included	Included

