



ELECTRONIC COPY

LG743570451
Report verification at igi.org



November 26, 2025

IGI Report Number **LG743570451**

Description **LABORATORY GROWN DIAMOND**

Shape and Cutting Style **CUT CORNERED
RECTANGULAR MODIFIED
BRILLIANT**

Measurements **10.46 X 7.26 X 4.95 MM**

GRADING RESULTS

Carat Weight **3.65 CARATS**

Color Grade **FANCY INTENSE YELLOW**

Clarity Grade **VS 2**

November 26, 2025

IGI Report Number **LG743570451**

Description **LABORATORY GROWN DIAMOND**

Shape and Cutting Style **CUT CORNERED RECTANGULAR
MODIFIED BRILLIANT**

Measurements **10.46 X 7.26 X 4.95 MM**

GRADING RESULTS

Carat Weight **3.65 CARATS**

Color Grade **FANCY INTENSE YELLOW**

Clarity Grade **VS 2**

ADDITIONAL GRADING INFORMATION

Polish **EXCELLENT**

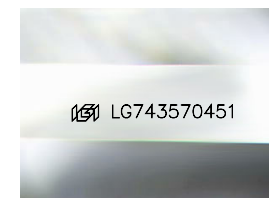
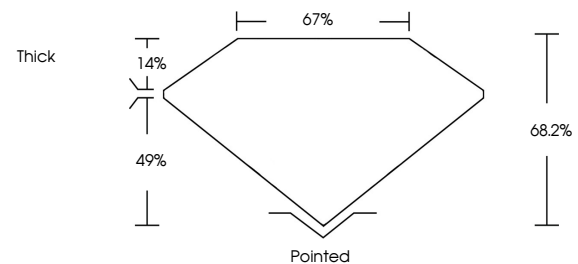
Symmetry **EXCELLENT**

Fluorescence **NONE**

Inscription(s) **IGI LG743570451**

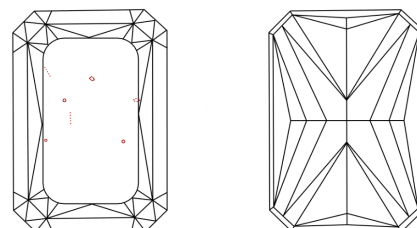
Comments: This Laboratory Grown Diamond was created by Chemical Vapor Deposition (CVD) growth process.

PROPORTIONS



Sample Image Used

CLARITY CHARACTERISTICS



KEY TO SYMBOLS

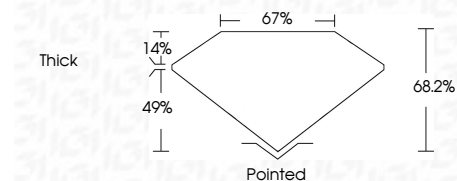
Red symbols indicate internal characteristics.
Green symbols indicate external characteristics.

COLOR

D E F G H I J Faint Very Light Light

CLARITY

FL	IF	VS ¹⁻²	VS ¹⁻²	SI ¹⁻²	I ¹⁻³
Flawless	Internally Flawless	Very Very Slightly Included	Very Slightly Included	Slightly Included	Included



ADDITIONAL GRADING INFORMATION

Polish **EXCELLENT**

Symmetry **EXCELLENT**

Fluorescence **NONE**

Inscription(s) **IGI LG743570451**

Comments: This Laboratory Grown Diamond was created by Chemical Vapor Deposition (CVD) growth process.



IGI



November 26, 2025
IGI Report No LG743570451
CUT CORNERED RECT. MODIFIED BRILLIANT

10.46 X 7.26 X 4.95 MM
3.65 CARATS
FANCY INTENSE YELLOW
VS 2
68.2%
67%
Thick

Pointed
EXCELLENT
EXCELLENT
NONE
IGI LG743570451

Comments: This Laboratory Grown Diamond was created by Chemical Vapor Deposition (CVD) growth process.