



ELECTRONIC COPY

LG743569248
Report verification at igi.org



November 21, 2025

IGI Report Number **LG743569248**

Description **LABORATORY GROWN DIAMOND**

Shape and Cutting Style **PEAR BRILLIANT**

Measurements **11.79 X 7.42 X 4.80 MM**

GRADING RESULTS

Carat Weight **2.52 CARATS**

Color Grade **G**

Clarity Grade **VS 2**

November 21, 2025
IGI Report Number **LG743569248**
Description **LABORATORY GROWN DIAMOND**
Shape and Cutting Style **PEAR BRILLIANT**
Measurements **11.79 X 7.42 X 4.80 MM**

GRADING RESULTS

Carat Weight **2.52 CARATS**

Color Grade **G**

Clarity Grade **VS 2**

ADDITIONAL GRADING INFORMATION

Polish **EXCELLENT**

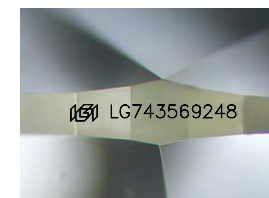
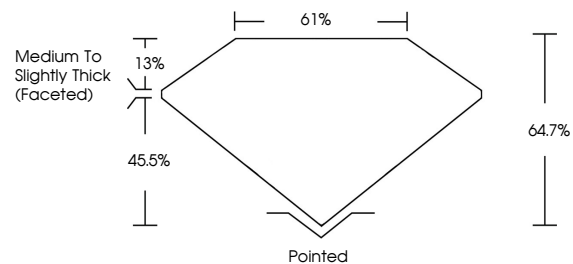
Symmetry **EXCELLENT**

Fluorescence **NONE**

Inscription(s) **IGI LG743569248**

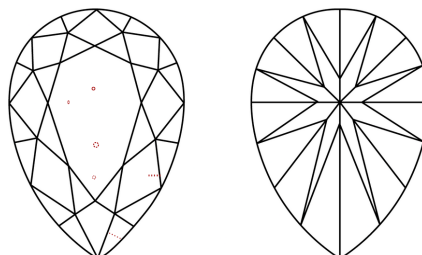
Comments: This Laboratory Grown Diamond was created by Chemical Vapor Deposition (CVD) growth process.
Type IIa

PROPORTIONS



Sample Image Used

CLARITY CHARACTERISTICS



KEY TO SYMBOLS

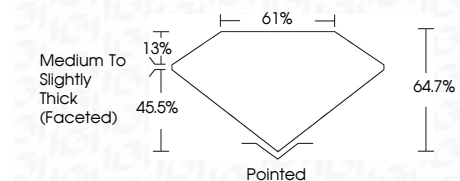
Red symbols indicate internal characteristics.
Green symbols indicate external characteristics.

COLOR

D E F G H I J Faint Very Light Light

CLARITY

FL	IF	VS ¹⁻²	VS ¹⁻²	SI ¹⁻²	I ¹⁻³
Flawless	Internally Flawless	Very Very Slightly Included	Very Slightly Included	Slightly Included	Included



ADDITIONAL GRADING INFORMATION

Polish **EXCELLENT**

Symmetry **EXCELLENT**

Fluorescence **NONE**

Inscription(s) **IGI LG743569248**

Comments: This Laboratory Grown Diamond was created by Chemical Vapor Deposition (CVD) growth process.
Type IIa



IGI



November 21, 2025
IGI Report No LG743569248
PEAR BRILLIANT

11.79 X 7.42 X 4.80 MM

2.52 CARATS
Color Grade **G**

Clarity Grade **VS 2**

Depth 13%
Table 45.5%
Girdle 61%
Medium to Slightly Thick (Faceted)

Culet Pointed
Polish EXCELLENT
Symmetry EXCELLENT
Fluorescence NONE
Inscription(s) IGI LG743569248

Comments: This Laboratory Grown Diamond was created by Chemical Vapor Deposition (CVD) growth process.
Type IIa