



ELECTRONIC COPY

LG743567037 Report verification at igi.org



November 6, 2025 IGI Report Number LG743567037 Description LABORATORY GROWN DIAMOND Shape and Cutting Style HEXAGONAL MODIFIED BRILLIANT Measurements 19.76 X 10.17 X 6.59 MM GRADING RESULTS Carat Weight 8.05 CARATS Color Grade F Clarity Grade VS 1

LABORATORY GROWN DIAMOND REPORT

November 6, 2025 IGI Report Number LG743567037 Description LABORATORY GROWN DIAMOND Shape and Cutting Style HEXAGONAL MODIFIED BRILLIANT Measurements 19.76 X 10.17 X 6.59 MM

GRADING RESULTS

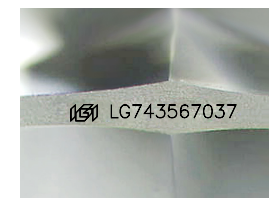
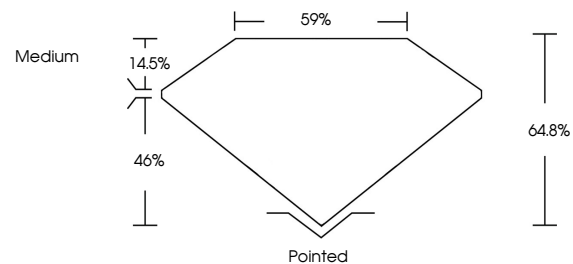
Carat Weight 8.05 CARATS Color Grade F Clarity Grade VS 1

ADDITIONAL GRADING INFORMATION

Polish EXCELLENT Symmetry EXCELLENT Fluorescence NONE Inscription(s) LG743567037

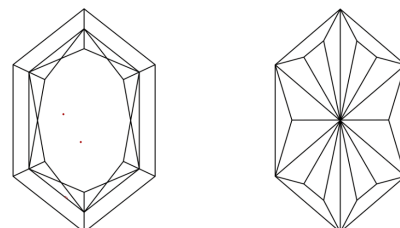
Comments: This Laboratory Grown Diamond was created by Chemical Vapor Deposition (CVD) growth process. Type IIa

PROPORTIONS



Sample Image Used

CLARITY CHARACTERISTICS



KEY TO SYMBOLS

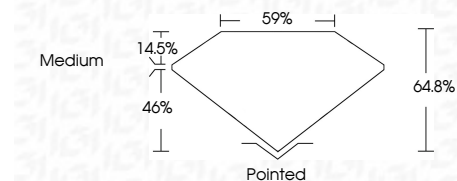
Red symbols indicate internal characteristics. Green symbols indicate external characteristics.

COLOR

D E F G H I J Faint Very Light Light

CLARITY

FL IF VS 1-2 VS 2-3 SI 1-2 I 1-3 Flawless Internally Flawless Very Very Slightly Included Very Slightly Included Slightly Included Included



ADDITIONAL GRADING INFORMATION

Polish EXCELLENT Symmetry EXCELLENT Fluorescence NONE Inscription(s) LG743567037 Comments: This Laboratory Grown Diamond was created by Chemical Vapor Deposition (CVD) growth process. Type IIa



November 6, 2025 IGI Report No LG743567037 HEXAGONAL MODIFIED BRILLIANT 8.05 CARATS F VS 1 64.6% 46% Medium Pointed EXCELLENT EXCELLENT NONE NONE LG743567037 Comments: This Laboratory Grown Diamond was created by Chemical Vapor Deposition (CVD) growth process. Type IIa