



ELECTRONIC COPY

LG743566890
Report verification at igi.org



November 13, 2025
IGI Report Number **LG743566890**
Description **LABORATORY GROWN DIAMOND**
Shape and Cutting Style **CUSHION MODIFIED BRILLIANT**
Measurements **16.05 X 11.67 X 7.47 MM**
GRADING RESULTS
Carat Weight **12.03 CARATS**
Color Grade **FANCY VIVID PINK**
Clarity Grade **VS 1**

LABORATORY GROWN DIAMOND REPORT

November 13, 2025
IGI Report Number **LG743566890**
Description **LABORATORY GROWN DIAMOND**
Shape and Cutting Style **CUSHION MODIFIED BRILLIANT**
Measurements **16.05 X 11.67 X 7.47 MM**

GRADING RESULTS

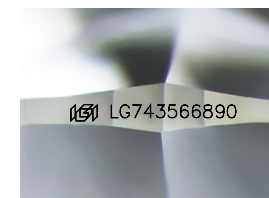
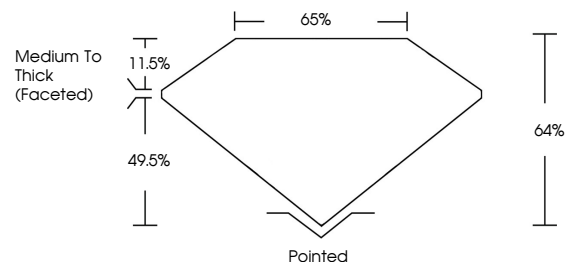
Carat Weight **12.03 CARATS**
Color Grade **FANCY VIVID PINK**
Clarity Grade **VS 1**

ADDITIONAL GRADING INFORMATION

Polish **VERY GOOD**
Symmetry **EXCELLENT**
Fluorescence **STRONG**
Inscription(s) **LG743566890**

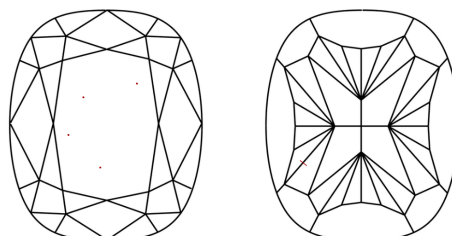
Comments: This Laboratory Grown Diamond was created by Chemical Vapor Deposition (CVD) growth process.
Indications of post-growth treatment.

PROPORTIONS



Sample Image Used

CLARITY CHARACTERISTICS



KEY TO SYMBOLS

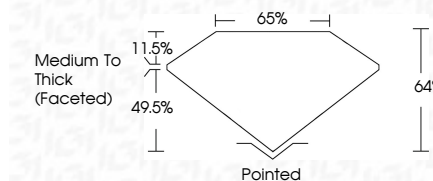
Red symbols indicate internal characteristics.
Green symbols indicate external characteristics.

COLOR

D E F G H I J Faint Very Light Light

CLARITY

FL	IF	VS ¹⁻²	VS ¹⁻²	SI ¹⁻²	I ¹⁻³
Flawless	Internally Flawless	Very Very Slightly Included	Very Slightly Included	Slightly Included	Included



ADDITIONAL GRADING INFORMATION

Polish **VERY GOOD**
Symmetry **EXCELLENT**
Fluorescence **STRONG**
Inscription(s) **LG743566890**
Comments: This Laboratory Grown Diamond was created by Chemical Vapor Deposition (CVD) growth process.
Indications of post-growth treatment.



November 13, 2025
IGI Report No **LG743566890**
CUSHION MODIFIED BRILLIANT
16.05 X 11.67 X 7.47 MM
Carat Weight **12.03 CARATS**
Color Grade **FANCY VIVID PINK**
Clarity Grade **VS 1**
Depth **64%**
Table **49.5%**
Girdle **Medium To Thick (Faceted)**
Culet **Pointed**
Polish **VERY GOOD**
Symmetry **EXCELLENT**
Fluorescence **STRONG**
Inscription(s) **LG743566890**
Comments: This Laboratory Grown Diamond was created by Chemical Vapor Deposition (CVD) growth process.
Indications of post-growth treatment.