



ELECTRONIC COPY

LABORATORY GROWN DIAMOND REPORT

October 30, 2025	
IGI Report Number	LG743566676
Description	LABORATORY GROWN DIAMOND
Shape and Cutting Style	SQUARE CUSHION MODIFIED BRILLIANT
Measurements	6.90 X 6.80 X 4.40 MM

GRADING RESULTS

Carat Weight	1.54 CARAT
Color Grade	G
Clarity Grade	VVS 2

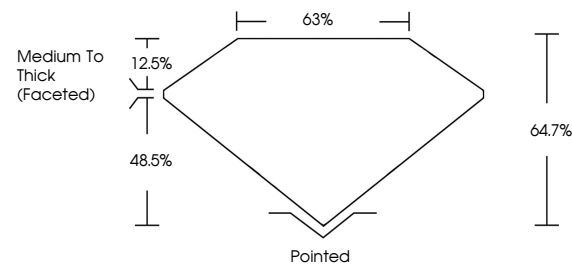
ADDITIONAL GRADING INFORMATION

Polish	EXCELLENT
Symmetry	EXCELLENT
Fluorescence	NONE
Inscription(s)	 LG743566676

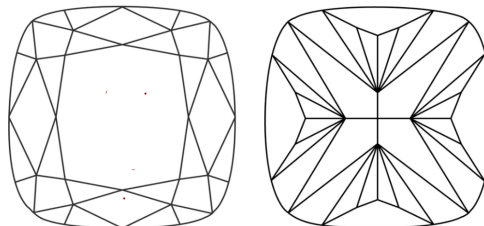
Comments: This Laboratory Grown Diamond was created by Chemical Vapor Deposition (CVD) growth process.
Type IIa

LG743566676
Report verification at igi.org

PROPORTIONS

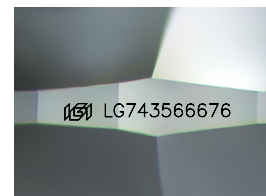


CLARITY CHARACTERISTICS



KEY TO SYMBOLS

Red symbols indicate internal characteristics.
Green symbols indicate external characteristics.



Sample Image Used

COLOR

D E F G H I J Faint Very Light Light

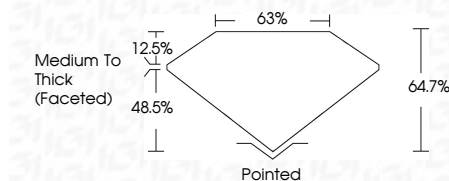
CLARITY

FL	IF	VVS ¹⁻²	VS ¹⁻²	SI ¹⁻²	I ¹⁻³
Flawless	Internally Flawless	Very Very Slightly Included	Very Slightly Included	Slightly Included	Included

LABORATORY GROWN DIAMOND REPORT



October 30, 2025	
IGI Report Number	LG743566676
Description	LABORATORY GROWN DIAMOND
Shape and Cutting Style	SQUARE CUSHION MODIFIED BRILLIANT
Measurements	6.90 X 6.80 X 4.40 MM
GRADING RESULTS	
Carat Weight	1.54 CARAT
Color Grade	G
Clarity Grade	VVS 2



ADDITIONAL GRADING INFORMATION

Polish	EXCELLENT
Symmetry	EXCELLENT
Fluorescence	NONE
Inscription(s)	(G) LG743566676
Comments: This Laboratory Grown Diamond was created by Chemical Vapor Deposition (CVD) growth process.	
Type IIa	



© IGI 2020, International Gemological Institute

FD - 10 20



THIS DOCUMENT WAS PRODUCED WITH THE FOLLOWING SECURITY MEASURES: SPECIAL DOCUMENT PAPER, INK SCREENS, WATERMARK, BACKGROUND DESIGNS, HOLOGRAM AND OTHER SECURITY FEATURES NOT LISTED AND DO EXCEED DOCUMENT SECURITY INDUSTRY GUIDELINES

www.igi.org

October 30, 2025	Q Report No. LG74566576	1.54 CARAT G
SQUARE CUSHION MODIFIED BRILLIANT		VVS 2
5.90 X 4.80 X 4.40 MM		64.7%
		63%
		Medium To Thick (Faceted)
		Pointed
		EXCELLENT
		EXCELLENT
		NONE
		689 LG74566576

Comments:

The Laboratory Grown Diamond was
 created by Chemical Vapor Deposition
 growth process.
 type IIa