

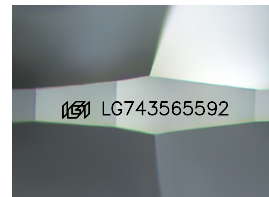
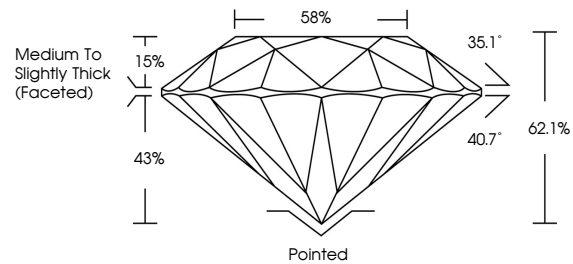


**INTERNATIONAL
GEMOLOGICAL
INSTITUTE**

ELECTRONIC COPY

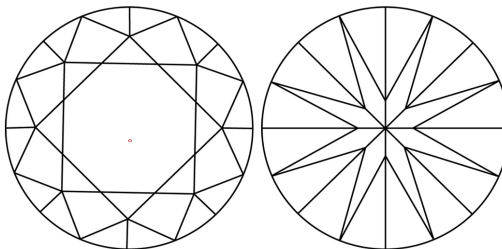
LG743565592
Report verification at igi.org

PROPORTIONS



Sample Image Used

CLARITY CHARACTERISTICS



KEY TO SYMBOLS

Red symbols indicate internal characteristics.
Green symbols indicate external characteristics.

COLOR

D E F G H I J Faint Very Light Light

CLARITY

FL IF WS¹⁻² VS¹⁻² SI¹⁻² I¹⁻³

Flawless	Internally Flawless	Very Very Slightly Included	Very Slightly Included	Slightly Included	Included
----------	---------------------	-----------------------------	------------------------	-------------------	----------

LABORATORY GROWN DIAMOND REPORT



October 16, 2025

IGI Report Number **LG743565592**

Description	LABORATORY GROWN DIAMOND
-------------	--------------------------

Shape and Cutting Style **ROUND BRILLIANT**

Measurements 7.99 - 8.04 X 4.98 MM

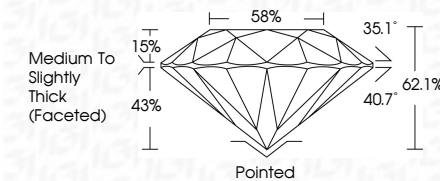
GRADING RESULTS

Carat Weight **2.01 CARATS**

Color Grade	D
-------------	---

Clarity Grade VS 1

Cut Grade **EXCELLENT**



ADDITIONAL GRADING INFORMATION

Polish **EXCELLENT**Symmetry **EXCELLENT**Fluorescence **NONE**Inscription(s) **1131 LG743565592**

Comments: This Laboratory Grown Diamond was created by Chemical Vapor Deposition (CVD) growth process.
Type IIa



IG



© IGI 2020, International Gemological Institute

FD - 10 20

www.igi.org

THIS DOCUMENT WAS PRODUCED WITH THE FOLLOWING SECURITY MEASURES: SPECIAL DOCUMENT PAPER, INK SCREENS, WATERMARK, BACKGROUND DESIGNS, HOLOGRAM AND OTHER SECURITY FEATURES NOT LISTED AND DO EXCEED DOCUMENT SECURITY INDUSTRY GUIDELINES

October 16, 2025
IGI Report No LG743565592
ROUND BRILLIANT

7.99 - 8.04 X 4.95 MM	2.01 CARATS	D
Carat Weight		VS 1
Color Grade	EXCELLENT	62.1%
Clarity Grade	58%	Medium to slightly Thick (faceted)
Cut Grade		Pointed
Depth		EXCELLENT
Table		EXCELLENT
Girdle		NONE
Culet		4mm 1.57 14.95 15.92
Polish		
Symmetry		
Fluorescence		
Measurements		

Comments:
This Laboratory Grown Diamond was created by Chemical Vapor Deposition (CVD) growth process.