



ELECTRONIC COPY

LABORATORY GROWN DIAMOND REPORT

LG743563342
Report verification at igi.org

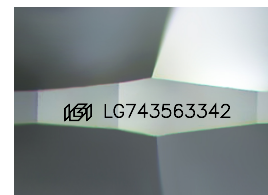
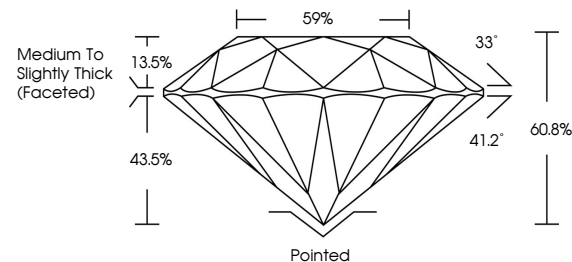
October 29, 2025	
IGI Report Number	LG743563342
Description	LABORATORY GROWN DIAMOND
Shape and Cutting Style	ROUND BRILLIANT
Measurements	8.81 - 8.87 X 5.38 MM
GRADING RESULTS	
Carat Weight	2.57 CARATS
Color Grade	E
Clarity Grade	VVS 2
Cut Grade	IDEAL

ADDITIONAL GRADING INFORMATION

Polish	EXCELLENT
Symmetry	EXCELLENT
Fluorescence	NONE
Inscription(s)	151 LG743563342

Comments: This Laboratory Grown Diamond was created by Chemical Vapor Deposition (CVD) growth process.
Type IIa

PROPORTIONS



Sample Image Used

COLOR

D E F G H I J Faint Very Light Light

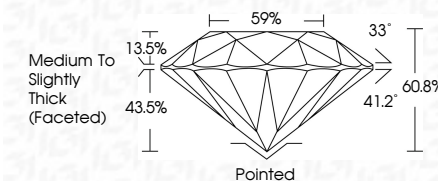
CLARITY

FL	IF	VVS ¹⁻²	VS ¹⁻²	SI ¹⁻²	I ¹⁻³
Flawless	Internally Flawless	Very Very Slightly Included	Very Slightly Included	Slightly Included	Included

LABORATORY GROWN DIAMOND REPORT



October 29, 2025	
IGI Report Number	LG743563342
Description	LABORATORY GROWN DIAMOND
Shape and Cutting Style	ROUND BRILLIANT
Measurements	8.81 - 8.87 X 5.38 MM
GRADING RESULTS	
Carat Weight	2.57 CARATS
Color Grade	E
Clarity Grade	VVS 2
Cut Grade	IDEAL



ADDITIONAL GRADING INFORMATION

Polish	EXCELLENT
Symmetry	EXCELLENT
Fluorescence	NONE
Inscription(s)	 LG743563342
<p>Comments: This Laboratory Grown Diamond was created by Chemical Vapor Deposition (CVD) growth process.</p> <p>Type IIa</p>	



© IGI 2020, International Gemological Institute

FD - 10 20



THIS DOCUMENT WAS PRODUCED WITH THE FOLLOWING SECURITY MEASURES: SPECIAL DOCUMENT PAPER, INK SCREENS, WATERMARK, BACKGROUND DESIGNS, HOLOGRAM AND OTHER SECURITY FEATURES NOT LISTED AND DO EXCEED DOCUMENT SECURITY INDUSTRY GUIDELINES

www.igi.org

October 29, 2025
GI Report No LG743563342
ROUND BRILLIANT

ROUND BRILLIANT	1.01 - 0.67 X 5.38 MM	257 CARATS
Color	Carat Weight	
Color Grade	E	
Clarity Grade	VVS 2	
Cut Grade	IDEAL	
Depth	60.0%	
Table	59%	
Girdle	Medium to Slightly Thick (Facing)	
Culet	Pointed	
Polish	EXCELLENT	
Symmetry	EXCELLENT	
Fluorescence	NONE	
		4611271853020

Comments:
This Laboratory Grown Diamond was
created by Chemical Vapor Deposition
(CVD) growth process.