

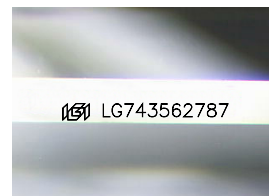
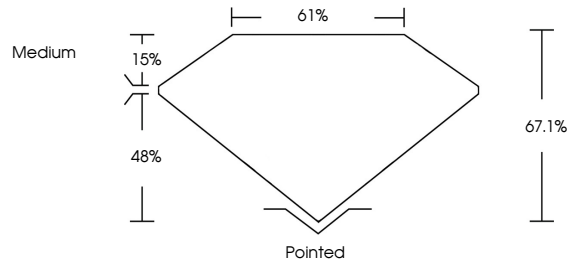


**INTERNATIONAL  
GEMOLOGICAL  
INSTITUTE**

**ELECTRONIC COPY**

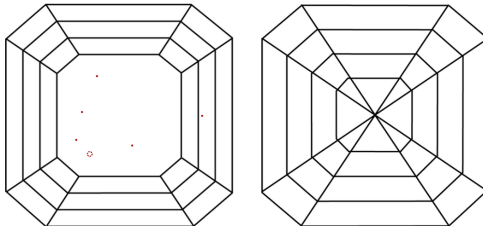
LG743562787  
Report verification at [igi.org](https://igi.org)

## PROPORTIONS



Sample Image Used

## CLARITY CHARACTERISTICS



## KEY TO SYMBOLS

Red symbols indicate internal characteristics.  
Green symbols indicate external characteristics.

## COLOR

D E F G H I J Faint Very Light Light

## CLARITY

FL	IF	VVS <sup>1-2</sup>	VS <sup>1-2</sup>	SI <sup>1-2</sup>	I <sup>1-3</sup>
Flawless	Internally Flawless	Very Very Slightly Included	Very Slightly Included	Slightly Included	Included

LABORATORY GROWN DIAMOND REPORT



October 29, 2025

IGI Report Number **LG743562787**

Description	LABORATORY GROWN DIAMOND
-------------	--------------------------

Shape and Cutting Style **SQUARE EMERALD CUT**

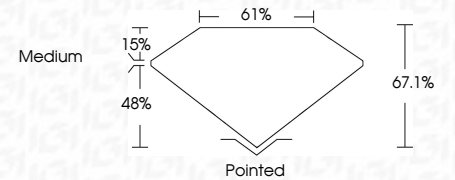
Measurements 8.05 X 7.88 X 5.29 MM

## GRADING RESULTS

Carat Weight **3.09 CARATS**

Color Grade	E
-------------	---

Clarity Grade VS 1



### ADDITIONAL GRADING INFORMATION

Polish **EXCELLENT**Symmetry **EXCELLENT**Fluorescence **NONE**Inscription(s)  LG743562787

Comments: This Laboratory Grown Diamond was created by Chemical Vapor Deposition (CVD) growth process.  
Type IIa



IGI

**www.igi.org**

© IGI 2020, International Gemological Institute

FD - 10 20



THIS DOCUMENT WAS PRODUCED WITH THE FOLLOWING SECURITY MEASURES: SPECIAL DOCUMENT PAPER, INK SCREENS, WATERMARK BACKGROUND DESIGNS, HOLOGRAM AND OTHER SECURITY FEATURES NOT LISTED AND DO EXCEED DOCUMENT SECURITY INDUSTRY GUIDELINES.

October 29, 2025  
IGI Report No LG743562787  
SQUARE EMERALD CUT

8.05 X 7.68 X 5.29 MM	3.09 CARATS	
Carat Weight	VS 1	Pointed
Color Grade	67.1%	EXCELLENT
Clarity Grade	61%	EXCELLENT
Depth	Medium	NONE
Table		1691 LG74326767
Grade		Inscriptions
Culet		
Polish		
Symmetry		
Fluorescence		
Inscriptions		

**Comments:**  
This Laboratory Grown Diamond was created by Chemical Vapor Deposition (CVD) growth process.  
Type IIa