



ELECTRONIC COPY

LABORATORY GROWN DIAMOND REPORT

LG743561855
Report verification at igi.org

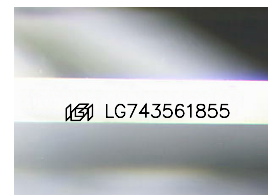
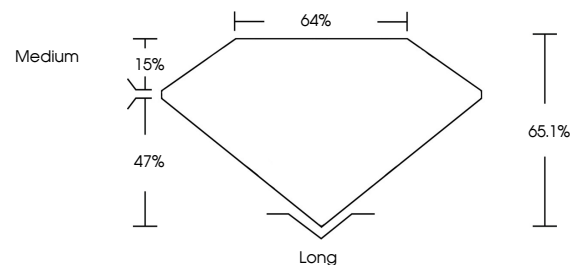
| | |
|-------------------------|--------------------------|
| October 17, 2025 | |
| IGI Report Number | LG743561855 |
| Description | LABORATORY GROWN DIAMOND |
| Shape and Cutting Style | EMERALD CUT |
| Measurements | 10.69 X 7.07 X 4.60 MM |
| GRADING RESULTS | |
| Carat Weight | 3.38 CARATS |
| Color Grade | E |
| Clarity Grade | VVS 2 |

ADDITIONAL GRADING INFORMATION

| | |
|----------------|-----------------|
| Polish | EXCELLENT |
| Symmetry | EXCELLENT |
| Fluorescence | NONE |
| Inscription(s) | 151 LG743561855 |

Comments: This Laboratory Grown Diamond was created by Chemical Vapor Deposition (CVD) growth process.
Type IIa

PROPORTIONS



Sample Image Used

COLOR

D E F G H I J Faint Very Light Light

CLARITY

| FL | IF | VVS ¹⁻² | VS ¹⁻² | SI ¹⁻² | I ¹⁻³ |
|----------|---------------------|-----------------------------|------------------------|-------------------|------------------|
| Flawless | Internally Flawless | Very Very Slightly Included | Very Slightly Included | Slightly Included | Included |

LABORATORY GROWN DIAMOND REPORT



| | |
|-------------------------|--------------------------|
| October 17, 2025 | |
| IGI Report Number | LG743561855 |
| Description | LABORATORY GROWN DIAMOND |
| Shape and Cutting Style | EMERALD CUT |
| Measurements | 10.69 X 7.07 X 4.60 MM |
| GRADING RESULTS | |
| Carat Weight | 3.38 CARATS |
| Color Grade | E |
| Clarity Grade | VVS 2 |

ADDITIONAL GRADING INFORMATION

| | |
|--|---|
| Polish | EXCELLENT |
| Symmetry | EXCELLENT |
| Fluorescence | NONE |
| Inscription(s) |  LG743561855 |
| Comments: This Laboratory Grown Diamond was created by Chemical Vapor Deposition (CVD) growth process. | |
| Type IIa | |



© IGI 2020, International Gemological Institute

FD - 10 20



THIS DOCUMENT WAS PRODUCED WITH THE FOLLOWING SECURITY MEASURES: SPECIAL DOCUMENT PAPER, INK SCREENS, WATERMARK, BACKGROUND DESIGNS, HOLOGRAM AND OTHER SECURITY FEATURES NOT LISTED AND DO EXCEED DOCUMENT SECURITY INDUSTRY GUIDELINES

www.igi.org

October 17, 2025
 CGI Report No LG743561855
 EMERALD CIT

| | | |
|------------------------|-------------------|----------------|
| 10.69 X 7.07 X 4.60 MM | Carat Weight | 3.38 CARATS |
| | Color Grade | E |
| | Clarity Grade | VVS 2 |
| | Depth | 65.1% |
| | Table | 64% |
| | Girdle | Medium |
| | Culet | Long |
| | Polish | EXCELLENT |
| | Symmetry | EXCELLENT |
| | Fluorescence | NONE |
| | Measurements (mm) | See 1274501195 |

Comments:
This Laboratory Grown Diamond was
created by Chemical Vapor Deposition
(CVD) growth process.