

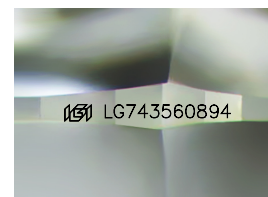
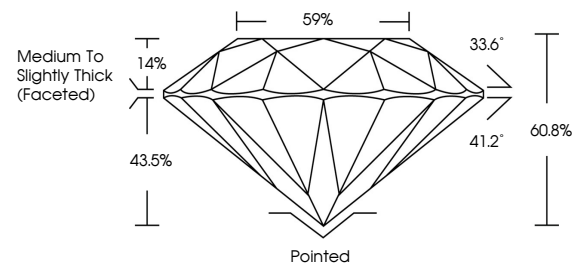


ELECTRONIC COPY

LABORATORY GROWN DIAMOND REPORT

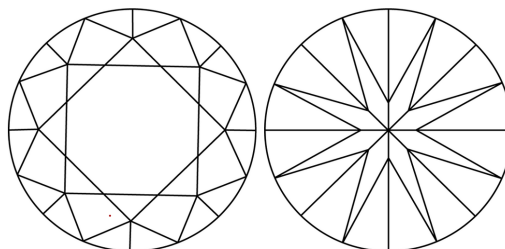
LG743560894
Report verification at igi.org

PROPORTIONS



Sample Image Used

CLARITY CHARACTERISTICS



KEY TO SYMBOLS

Red symbols indicate internal characteristics.
Green symbols indicate external characteristics.

COLOR

D E F G H I J Faint Very Light Light

CLARITY

FL	IF	VVS ¹⁻²	VS ¹⁻²	SI ¹⁻²	I ¹⁻³
Flawless	Internally Flawless	Very Very Slightly Included	Very Slightly Included	Slightly Included	Included

LABORATORY GROWN DIAMOND REPORT



October 17, 2025

IGI Report Number **LG743560894**

Description	LABORATORY GROWN DIAMOND
-------------	--------------------------

Shape and Cutting Style **ROUND BRILLIANT**

Measurements 9.11 - 9.15 X 5.55 MM

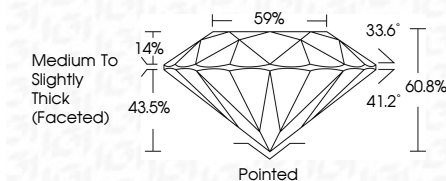
GRADING RESULTS

Carat Weight 2.84 CARATS

Color Grade	D
-------------	---

Clarity Grade WS 2

Cut Grade **IDEAL**



ADDITIONAL GRADING INFORMATION

Polish **EXCELLENT**Symmetry **EXCELLENT**

Fluorescence NON

Inscription(s) LG743560894

Comments: This Laboratory Grown Diamond was created by Chemical Vapor Deposition (CVD) growth process.
Type IIa



© IGI 2020, International Gemological Institute

FD - 10 20

www.igi.org

THIS DOCUMENT WAS PRODUCED WITH THE FOLLOWING SECURITY MEASURES: SPECIAL DOCUMENT PAPER, INK SCREENS, WATERMARK, BACKGROUND DESIGNS, HOLOGRAM AND OTHER SECURITY FEATURES NOT LISTED AND DO EXCEED DOCUMENT SECURITY INDUSTRY GUIDELINES

October 17, 2025
GI Report No LG743560894
ROUND BRILLIANT

9.11" - 9.15" X 5.55" MM	Color Grade	Clarity Grade	VVS 2	2.64 CARATS D IDEAL 60.95% 59% Medium to Slightly Thick (Faceted)	Pointed
Carat Weight	Cut Grade	Depth	EXCELLENT		
Table	Girdle	Symmetry	EXCELLENT		
Fluorescence			NONE		
			None / Very Slight		

Comments:
This Laboratory Grown Diamond was created by Chemical Vapor Deposition (CVD) growth process.