



LABORATORY GROWN DIAMOND REPORT

November 3, 2025
 IGI Report Number **LG743559958**
 Description **LABORATORY GROWN DIAMOND**
 Shape and Cutting Style **PEAR MODIFIED BRILLIANT**
 Measurements **7.94 X 5.09 X 3.17 MM**

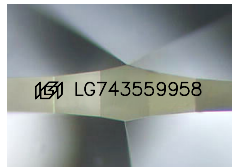
GRADING RESULTS

Carat Weight **0.90 CARAT**
 Color Grade **O-P**
 Clarity Grade **VS 2**

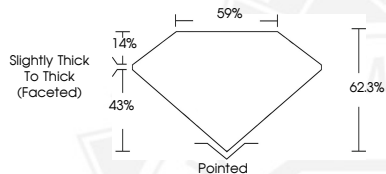
ADDITIONAL GRADING INFORMATION

Polish **EXCELLENT**
 Symmetry **EXCELLENT**
 Fluorescence **NONE**
 Inscription(s) **IGI LG743559958**

Comments: This Laboratory Grown Diamond was created by
 Chemical Vapor Deposition (CVD) growth process.
 Type IIa



Sample Image Used



November 3, 2025
 IGI Report Number **LG743559958**
PEAR MODIFIED BRILLIANT
LABORATORY GROWN DIAMOND
7.94 X 5.09 X 3.17 MM
 Carat Weight **0.90 CARAT**
 Color Grade **O-P**
 Clarity Grade **VS 2**
 Polish **EXCELLENT**
 Symmetry **EXCELLENT**
 Fluorescence **NONE**
 Inscription(s) **IGI LG743559958**

Comments: This Laboratory Grown Diamond was created by
 Chemical Vapor Deposition (CVD) growth process. Type IIa



November 3, 2025
 IGI Report Number **LG743559958**
PEAR MODIFIED BRILLIANT
LABORATORY GROWN DIAMOND
7.94 X 5.09 X 3.17 MM
 Carat Weight **0.90 CARAT**
 Color Grade **O-P**
 Clarity Grade **VS 2**
 Polish **EXCELLENT**
 Symmetry **EXCELLENT**
 Fluorescence **NONE**
 Inscription(s) **IGI LG743559958**

Comments: This Laboratory Grown Diamond was created by
 Chemical Vapor Deposition (CVD) growth process. Type IIa



THIS DOCUMENT WAS PRODUCED WITH THE FOLLOWING SECURITY MEASURES: SPECIAL DOCUMENT PAPER, INK SCREENS, WATERMARK, BACKGROUND DESIGNS, HOLOGRAM AND OTHER SECURITY FEATURES NOT LISTED AND DO EXCEED DOCUMENT SECURITY INDUSTRY GUIDELINES.