



**INTERNATIONAL
GEMOLOGICAL
INSTITUTE**

ELECTRONIC COPY

LG743555628
Report verification at igi.org

LABORATORY GROWN DIAMOND REPORT



October 22, 2025

IGI Report Number **LG743555628**

| | |
|-------------|--------------------------|
| Description | LABORATORY GROWN DIAMOND |
|-------------|--------------------------|

Shape and Cutting Style **SQUARE CUSHION MODIFIED
BRILLIANT**

Measurements **8.09 X 7.99 X 5.64 MM**

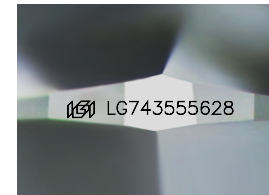
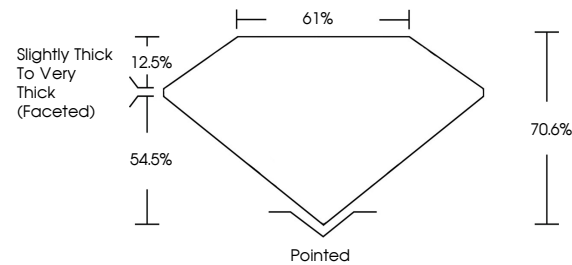
GRADING RESULTS

Carat Weight **3.03 CARATS**

Color Grade D

Clarity Grade **VVS 2**

PROPORTIONS



Sample Image Used

COLOR

D E F G H I J Faint Very Light Light

CLARITY

FL IF VS¹⁻² VS¹⁻² S¹⁻² |¹⁻³

| | | | | | |
|----------|---------------------|------------------------|------------------------|-------------------|----------|
| Flawless | Internally Flawless | Very Slightly Included | Very Slightly Included | Slightly Included | Included |
|----------|---------------------|------------------------|------------------------|-------------------|----------|

ADDITIONAL GRADING INFORMATION

Polish **EXCELLENT**Symmetry **EXCELLENT**Fluorescence **NONE**Inscription(s) LG743555628

Comments: This Laboratory Grown Diamond was created by Chemical Vapor Deposition (CVD) growth process.
Type IIa



IGI



© IGI 2020, International Gemological Institute

FD - 10 20

www.igi.org

THIS DOCUMENT WAS PRODUCED WITH THE FOLLOWING SECURITY MEASURES: SPECIAL DOCUMENT PAPER, INK SCREENS, WATERMARK, BACKGROUND DESIGNS, HOLOGRAM AND OTHER SECURITY FEATURES NOT LISTED AND DO EXCEED DOCUMENT SECURITY INDUSTRY GUIDELINES

| | | | | | | | | | | | | |
|-----------------------------------|--------------------------|--|---------------|-------------|---------------|--------|--|----------|-----------|--------------|----------------|----------------|
| October 22, 2025 | IGI Report No.IG74355628 | 3.03 CARATS | D | VVS 2 | 70.0% | 61% | Slightly Thick to Very Thick (Faceted) | Polished | EXCELLENT | EXCELLENT | NONE | IGI LG74355628 |
| SQUARE CUSHION MODIFIED BRILLIANT | | 0.90 X 7.09 X 5.64 MM | | Color Grade | Clarity Grade | Depth | Table | Girdle | Culet | Polish | Symmetry | Fluorescence |
| | | Color Grade | Clarity Grade | Depth | Table | Girdle | Culet | Polish | Symmetry | Fluorescence | Inscription(s) | Comments: |
| | | This Laboratory Grown Diamond was created by Chemical Vapor Deposition (CVD) growth process. | | | | | | | | | | |
| | | Type Ila | | | | | | | | | | |