

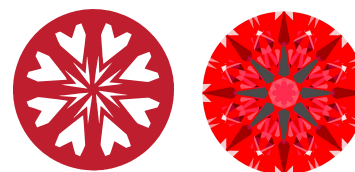


# INTERNATIONAL GEMOLOGICAL INSTITUTE

LG743549748  
Report verification at igi.org

## LIGHT PERFORMANCE REPORT

Light Performance Grade: **Exceptional**



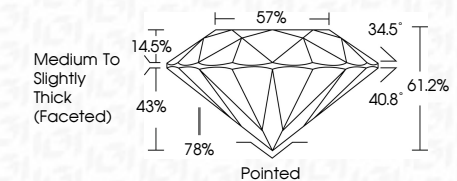
### Structured Light Environment Representation



FL	IF	VS <sup>1-2</sup>	VS <sup>1-2</sup>	SI <sup>1-2</sup>	I <sup>1-3</sup>
Flawless	Internally Flawless	Very Very Slightly Included	Very Slightly Included	Slightly Included	Included



October 17, 2025  
 IGI Report Number **LG743549748**  
 Description **LABORATORY GROWN DIAMOND**  
 Shape and Cutting Style **ROUND BRILLIANT**  
 Measurements **9.12 - 9.20 X 5.60 MM**  
**GRADING RESULTS**  
 Carat Weight **2.88 CARATS**  
 Color Grade **D**  
 Clarity Grade **VS 1**  
 Cut Grade **IDEAL**



**ADDITIONAL GRADING INFORMATION**  
 Polish **EXCELLENT**  
 Symmetry **EXCELLENT**  
 Fluorescence **NONE**  
 Inscription(s) **IGI LG743549748**  
 Comments: HEARTS & ARROWS  
 This Laboratory Grown Diamond was created by Chemical Vapor Deposition (CVD) growth process. Type IIa

## ELECTRONIC COPY LABORATORY GROWN DIAMOND REPORT

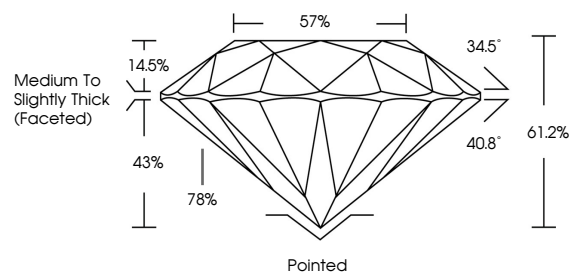
October 17, 2025  
 IGI Report Number **LG743549748**  
 Description **LABORATORY GROWN DIAMOND**  
 Shape and Cutting Style **ROUND BRILLIANT**  
 Measurements **9.12 - 9.20 x 5.60 mm**

**GRADING RESULTS**  
 Carat Weight **2.88 CARATS**  
 Color Grade **D**  
 Clarity Grade **VS 1**  
 Cut Grade **IDEAL**

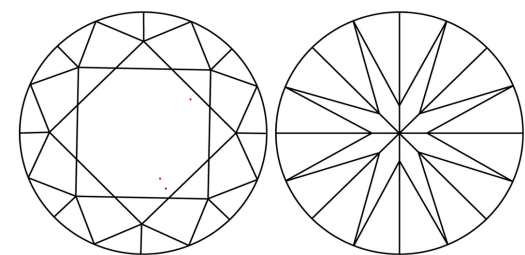
**ADDITIONAL GRADING INFORMATION**  
 Polish **EXCELLENT**  
 Symmetry **EXCELLENT**  
 Fluorescence **NONE**  
 Inscription(s) **IGI LG743549748**

Comments: HEARTS & ARROWS  
 This Laboratory Grown Diamond was created by Chemical Vapor Deposition (CVD) growth process. Type IIa

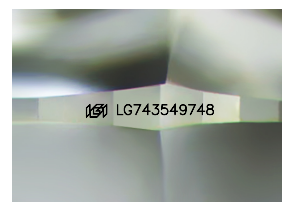
### PROPORTIONS



### CLARITY CHARACTERISTICS



**KEY TO SYMBOLS**  
 Red symbols indicate internal characteristics.  
 Green symbols indicate external characteristics.



Sample Image Used

www.igi.org

© IGI 2020, International Gemological Institute FD - 10 20

THIS DOCUMENT WAS PRODUCED WITH THE FOLLOWING SECURITY MEASURES: SPECIAL DOCUMENT PAPER, INK SCREENS, WATERMARK, BACKGROUND DESIGNS, HOLOGRAM AND OTHER SECURITY FEATURES NOT LISTED AND DO EXCEED DOCUMENT SECURITY INDUSTRY GUIDELINES.



October 17, 2025	IGI Report No LG743549748	2.88 CARATS	D
ROUND BRILLIANT		VS 1	IDEAL
9.12 - 9.20 X 5.60 MM		61.2%	57%
Color Grade		Medium To Slightly Thick (Faceted)	Pointed
Clarity Grade		EXCELLENT	EXCELLENT
Cut Grade		EXCELLENT	EXCELLENT
Depth		EXCELLENT	NONE
Table		EXCELLENT	EXCELLENT
Grade		EXCELLENT	EXCELLENT
Culet		EXCELLENT	EXCELLENT
Polish		EXCELLENT	EXCELLENT
Symmetry		EXCELLENT	EXCELLENT
Fluorescence		EXCELLENT	EXCELLENT
Inscription(s)		EXCELLENT	EXCELLENT
		EXCELLENT	EXCELLENT

Comments: HEARTS & ARROWS  
 This Laboratory Grown Diamond was created by Chemical Vapor Deposition (CVD) growth process. Type IIa