



**INTERNATIONAL
GEMOLOGICAL
INSTITUTE**

ELECTRONIC COPY

LG743549684
Report verification at igi.org

LABORATORY GROWN DIAMOND REPORT



October 17, 2025

IGI Report Number **LG743549684**

Description	LABORATORY GROWN DIAMOND
-------------	--------------------------

Shape and Cutting Style **CUSHION MODIFIED
BRILLIANT**

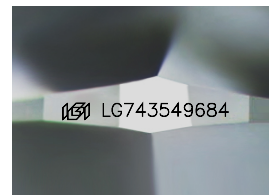
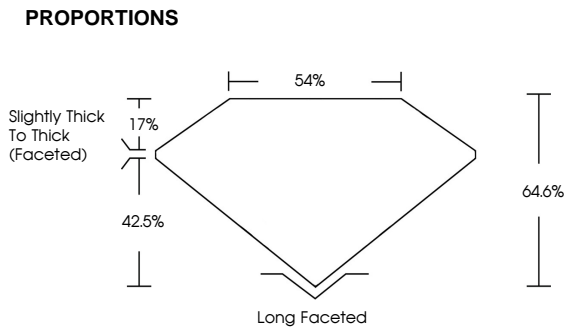
Measurements 11.06 X 8.13 X 5.25 MM

GRADING RESULTS

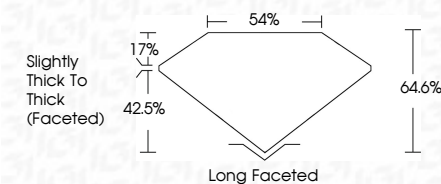
Carat Weight **3.62 CARATS**

Color Grade	D
-------------	---

Clarity Grade **VVS 2**



Sample Image Used



COLOR

D E F G H I J Faint Very Light Light

CLARITY

FL IF VWS¹⁻² VS¹⁻² SI¹⁻² I¹⁻³

Flawless	Internally Flawless	Very Very Slightly Included	Very Slightly Included	Slightly Included	Included
----------	---------------------	-----------------------------	------------------------	-------------------	----------

ADDITIONAL GRADING INFORMATION

Polish **EXCELLENT**Symmetry **EXCELLENT**

Fluorescence NONI

Inscription(s)  LG743549684

Comments: This Laboratory Grown Diamond was created by Chemical Vapor Deposition (CVD) growth process.
Type IIa



IG



© IGI 2020, International Gemological Institute

FD - 10 20

www.igi.org

THIS DOCUMENT WAS PRODUCED WITH THE FOLLOWING SECURITY MEASURES: SPECIAL DOCUMENT PAPER, INK SCREENS, WATERMARK, BACKGROUND DESIGNS, HOLOGRAM AND OTHER SECURITY FEATURES NOT LISTED AND DO EXCEED DOCUMENT SECURITY INDUSTRY GUIDELINES

October 17, 2025	GI Report No LG743549684	
CUSHION MODIFIED BRILLIANT		
11.06 X 6.13 X 5.25 MM	3.62 CARATS	
Color Weight	D	
Color Grade	VVS 2	
Depth	64.0%	
Table	54%	
Girdle	Slightly Thick to Thick (Faceted)	
Culet	Long Excluded	
Polish	Excellent	
Symmetry	Excellent	
Fluorescence	NONE	
Inscriptions(s)	lg81LG743549684	
Comments: This is a Chemically Grown Diamond was created by Chemical Vapor Deposition (CVD) growth process. Type IIa		

Comments:
This Laboratory Grown Diamond was
created by Chemical Vapor Deposition
(CVD) growth process.