



**ELECTRONIC COPY**

LG743546853  
Report verification at igi.org



November 6, 2025  
IGI Report Number **LG743546853**  
Description **LABORATORY GROWN DIAMOND**

Shape and Cutting Style **CUT CORNERED  
RECTANGULAR MODIFIED  
BRILLIANT**

Measurements **9.65 X 6.74 X 4.57 MM**

**GRADING RESULTS**

Carat Weight **2.81 CARATS**  
Color Grade **FANCY INTENSE YELLOW**  
Clarity Grade **VS 1**

November 6, 2025  
IGI Report Number **LG743546853**  
Description **LABORATORY GROWN DIAMOND**  
Shape and Cutting Style **CUT CORNERED RECTANGULAR  
MODIFIED BRILLIANT**  
Measurements **9.65 X 6.74 X 4.57 MM**

**GRADING RESULTS**

Carat Weight **2.81 CARATS**  
Color Grade **FANCY INTENSE YELLOW**  
Clarity Grade **VS 1**

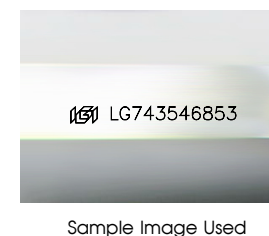
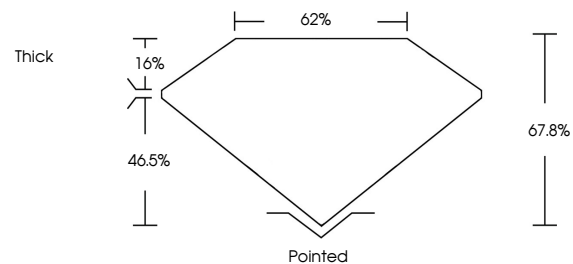
**ADDITIONAL GRADING INFORMATION**

Polish **EXCELLENT**  
Symmetry **EXCELLENT**  
Fluorescence **NONE**

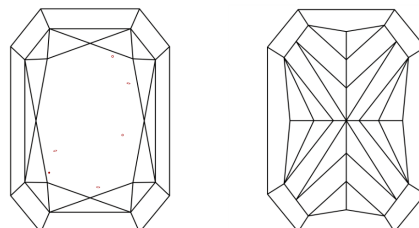
Inscription(s) **IGI LG743546853**

Comments: This Laboratory Grown Diamond was created by Chemical Vapor Deposition (CVD) growth process.

**PROPORTIONS**



**CLARITY CHARACTERISTICS**



**KEY TO SYMBOLS**

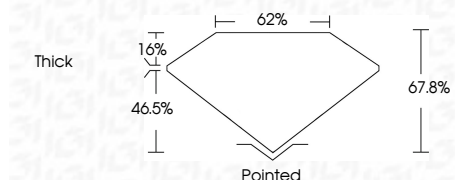
Red symbols indicate internal characteristics.  
Green symbols indicate external characteristics.

**COLOR**

D E F G H I J Faint Very Light Light

**CLARITY**

FL	IF	VS <sup>1-2</sup>	VS <sup>1-2</sup>	SI <sup>1-2</sup>	I <sup>1-3</sup>
Flawless	Internally Flawless	Very Very Slightly Included	Very Slightly Included	Slightly Included	Included



**ADDITIONAL GRADING INFORMATION**

Polish **EXCELLENT**  
Symmetry **EXCELLENT**  
Fluorescence **NONE**  
Inscription(s) **IGI LG743546853**

Comments: This Laboratory Grown Diamond was created by Chemical Vapor Deposition (CVD) growth process.



November 6, 2025  
IGI Report No **LG743546853**  
**CUT CORNERED RECT. MODIFIED BRILLIANT**  
**9.65 X 6.74 X 4.57 MM**  
Carat Weight **2.81 CARATS**  
Color Grade **FANCY INTENSE YELLOW**  
Clarity Grade **VS 1**  
Depth **67.0%**  
Table **62%**  
Girdle **Thick**  
Culet **Pointed**  
Polish **EXCELLENT**  
Symmetry **EXCELLENT**  
Fluorescence **NONE**  
Inscription(s) **IGI LG743546853**

Comments: This Laboratory Grown Diamond was created by Chemical Vapor Deposition (CVD) growth process.