



**ELECTRONIC COPY**

LG743546406  
Report verification at igi.org



November 6, 2025

IGI Report Number **LG743546406**

Description **LABORATORY GROWN DIAMOND**

Shape and Cutting Style **PEAR MODIFIED BRILLIANT**

Measurements **10.25 X 6.16 X 3.97 MM**

**GRADING RESULTS**

Carat Weight **1.80 CARAT**

Color Grade **FANCY LIGHT YELLOW**

Clarity Grade **VS 1**

November 6, 2025  
IGI Report Number **LG743546406**  
Description **LABORATORY GROWN DIAMOND**  
Shape and Cutting Style **PEAR MODIFIED BRILLIANT**  
Measurements **10.25 X 6.16 X 3.97 MM**

**GRADING RESULTS**

Carat Weight **1.80 CARAT**

Color Grade **FANCY LIGHT YELLOW**

Clarity Grade **VS 1**

**ADDITIONAL GRADING INFORMATION**

Polish **EXCELLENT**

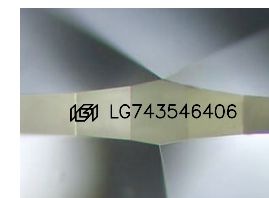
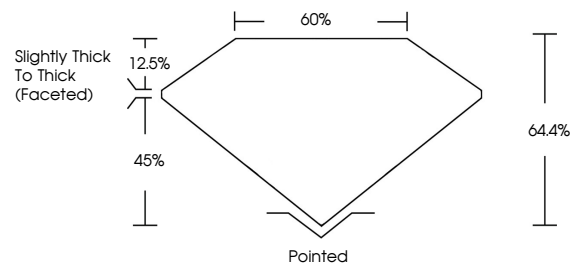
Symmetry **EXCELLENT**

Fluorescence **NONE**

Inscription(s) **IGI LG743546406**

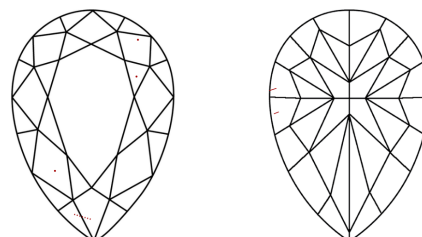
Comments: This Laboratory Grown Diamond was created by Chemical Vapor Deposition (CVD) growth process.

**PROPORTIONS**



Sample Image Used

**CLARITY CHARACTERISTICS**



**KEY TO SYMBOLS**

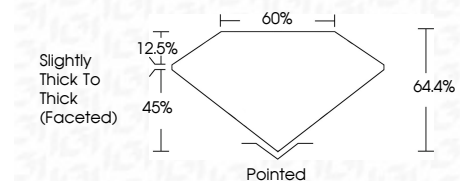
Red symbols indicate internal characteristics.  
Green symbols indicate external characteristics.

**COLOR**

D E F G H I J Faint Very Light Light

**CLARITY**

FL	IF	VS <sup>1-2</sup>	VS <sup>1-2</sup>	SI <sup>1-2</sup>	I <sup>1-3</sup>
Flawless	Internally Flawless	Very Very Slightly Included	Very Slightly Included	Slightly Included	Included



**ADDITIONAL GRADING INFORMATION**

Polish **EXCELLENT**

Symmetry **EXCELLENT**

Fluorescence **NONE**

Inscription(s) **IGI LG743546406**

Comments: This Laboratory Grown Diamond was created by Chemical Vapor Deposition (CVD) growth process.



**IGI**



November 6, 2025  
IGI Report No **LG743546406**  
**PEAR MODIFIED BRILLIANT**  
10.25 X 6.16 X 3.97 MM  
1.80 CARAT  
Color Grade **FANCY LIGHT YELLOW**  
Clarity Grade **VS 1**  
Depth **64.4%**  
Table **60%**  
Girdle **Slightly Thick To Thick (Faceted)**  
Culet **Pointed**  
Polish **EXCELLENT**  
Symmetry **EXCELLENT**  
Fluorescence **NONE**  
Inscription(s) **IGI LG743546406**  
Comments: This Laboratory Grown Diamond was created by Chemical Vapor Deposition (CVD) growth process.