



October 16, 2025

IGI Report Number LG743545182
HEXAGONAL MODIFIED STEP CUT
LABORATORY GROWN DIAMOND
8.09 X 4.32 X 2.60 MM

Carat Weight **0.66 CARAT**
Color Grade **E**
Clarity Grade **VVS 1**
Polish **EXCELLENT**
Symmetry **EXCELLENT**
Fluorescence **NONE**
Inscription(s) **IGI LG743545182**

Comments: This Laboratory Grown Diamond was created by Chemical Vapor Deposition (CVD) growth process. Type IIa

LABORATORY GROWN DIAMOND REPORT

October 16, 2025

IGI Report Number

LG743545182

Description

LABORATORY GROWN DIAMOND

Shape and Cutting Style

HEXAGONAL MODIFIED STEP CUT

Measurements

8.09 X 4.32 X 2.60 MM

GRADING RESULTS

Carat Weight

0.66 CARAT

Color Grade

E

Clarity Grade

VVS 1

ADDITIONAL GRADING INFORMATION

Polish

EXCELLENT

Symmetry

EXCELLENT

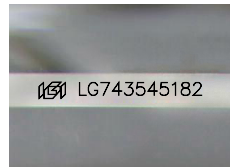
Fluorescence

NONE

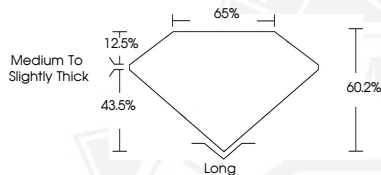
Inscription(s)

IGI LG743545182

Comments: This Laboratory Grown Diamond was created by Chemical Vapor Deposition (CVD) growth process. Type IIa



Sample Image Used



October 16, 2025

IGI Report Number LG743545182
HEXAGONAL MODIFIED STEP CUT
LABORATORY GROWN DIAMOND
8.09 X 4.32 X 2.60 MM

Carat Weight **0.66 CARAT**
Color Grade **E**
Clarity Grade **VVS 1**
Polish **EXCELLENT**
Symmetry **EXCELLENT**
Fluorescence **NONE**
Inscription(s) **IGI LG743545182**

Comments: This Laboratory Grown Diamond was created by Chemical Vapor Deposition (CVD) growth process. Type IIa



THIS DOCUMENT WAS PRODUCED WITH THE FOLLOWING SECURITY MEASURES: SPECIAL DOCUMENT PAPER, INK SCREENS, WATERMARK, BACKGROUND DESIGNS, HOLOGRAM AND OTHER SECURITY FEATURES NOT LISTED AND DO EXCEED DOCUMENT SECURITY INDUSTRY GUIDELINES.