



ELECTRONIC COPY

LG743544953
Report verification at igi.org



October 30, 2025
IGI Report Number LG743544953
Description LABORATORY GROWN DIAMOND
Shape and Cutting Style SQUARE CUSHION MODIFIED BRILLIANT
Measurements 5.73 X 5.67 X 3.84 MM
GRADING RESULTS
Carat Weight 1.01 CARAT
Color Grade FANCY INTENSE PINK
Clarity Grade VVS 2

October 30, 2025
IGI Report Number LG743544953
Description LABORATORY GROWN DIAMOND
Shape and Cutting Style SQUARE CUSHION MODIFIED BRILLIANT
Measurements 5.73 X 5.67 X 3.84 MM

GRADING RESULTS

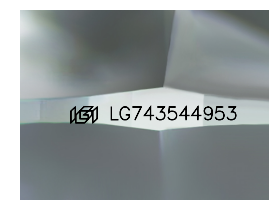
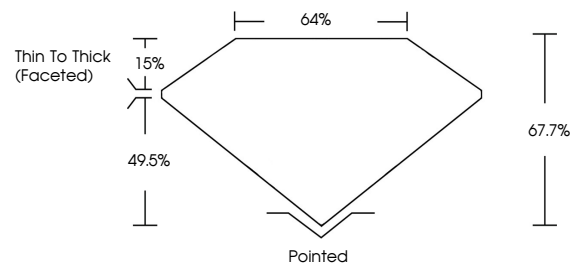
Carat Weight 1.01 CARAT
Color Grade FANCY INTENSE PINK
Clarity Grade VVS 2

ADDITIONAL GRADING INFORMATION

Polish VERY GOOD
Symmetry VERY GOOD
Fluorescence STRONG
Inscription(s) LG743544953

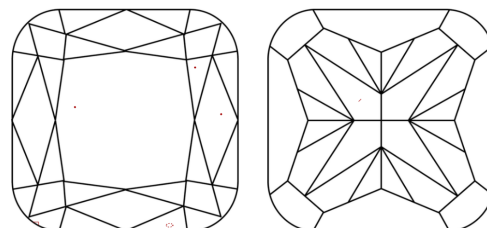
Comments: This Laboratory Grown Diamond was created by Chemical Vapor Deposition (CVD) growth process.
Indications of post-growth treatment.

PROPORTIONS



Sample Image Used

CLARITY CHARACTERISTICS



KEY TO SYMBOLS

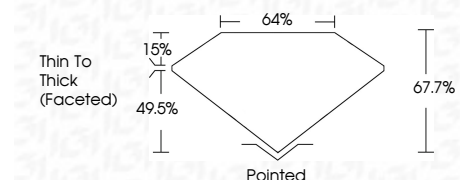
Red symbols indicate internal characteristics.
Green symbols indicate external characteristics.

COLOR

D E F G H I J Faint Very Light Light

CLARITY

FL IF VVS 1-2 VS 1-2 SI 1-2 I 1-3
Flawless Internally Flawless Very Very Slightly Included Very Slightly Included Slightly Included Included



ADDITIONAL GRADING INFORMATION

Polish VERY GOOD
Symmetry VERY GOOD
Fluorescence STRONG
Inscription(s) LG743544953
Comments: This Laboratory Grown Diamond was created by Chemical Vapor Deposition (CVD) growth process.
Indications of post-growth treatment.



October 30, 2025
IGI Report No LG743544953
SQUARE CUSHION MODIFIED BRILLIANT
1.01 CARAT
FANCY INTENSE PINK
VVS 2
5.73 X 5.67 X 3.84 MM
67.7%
64%
Thin To Thick (Faceted)
Polished
VERY GOOD
VERY GOOD
STRONG
Faint LG743544953
Comments: This Laboratory Grown Diamond was created by Chemical Vapor Deposition (CVD) growth process.
Indications of post-growth treatment.